



Brolgas. IVOR GRANEY

SUBMISSION TO

VicGrid Draft Transmission Plan

Victorian National Parks Association

Level 3, 60 Leicester Street, Carlton VIC 3025 • 03 9341 6500 • vnpa@vnpa.org.au • vnpa.org.au

ABN 34 217 717 593



VicGrid Draft Transmission Plan

Submission by the Victorian National Parks Association

Introduction

Thank you for inviting submissions into the first Victorian Transmission Plan.

The Victorian National Parks Association (VNPA) is an effective and influential nature conservation organisation.

We work with local communities, scientists and government to advocate for evidence-based policy to safeguard wildlife, habitat and protected areas. We inspire connections with nature through citizen science, activities, action and education for all Victorians.

We've led the creation, oversight and defence of Victoria's natural estate for over 70 years.

We acknowledge that the transmission lines and national parks are on the lands of numerous Traditional Owner groups and First Nations communities and honour their continuing connection to and caring for Country.

We support Traditional Owner joint-management of parks and public land for conservation of natural and cultural heritage.

Section 1: Recommendations

General Recommendations

- No new transmission lines within national parks and protected areas, as recognised under the Collaborative Australian Protected Areas Database.
- Renewable Energy Zones (REZ) need to be modified to better accommodate all protected areas and biodiversity values. Formal buffers should be considered for smaller reserves with zones.

- Funded independent research into adequate buffer zones around national parks and protected areas and areas of use by sensitive species.
- Incorporate other data sources such as the Atlas of Living Australia and iNaturalist into any sensitivity mapping done to avoid sensitive areas and species.
- Institute measures to reduce the impact of the current transmission line easements on wildlife and ecosystems (see examples in the appendices). This can be funded and maintained by power companies using the transmission lines and written into contracts such as those written for the Victorian Desalination Plant.

REZ based Recommendations

North West REZ

- Include a buffer around the reserves
- Removal of the Leaghur State Park from REZ.

Wimmera Southern Mallee REZ

- Include a 1km buffer around Barret Nature Conservation Reserve
- Include buffers around other reserves.

Grampians Wimmera REZ

- Removal of Morrl Morrl Nature Conservation Reserve from REZ
- Include buffers around Brolga hot spot north of the Wimmera Highway
- Include buffers around the other smaller reserves within the REZ.

Central Highlands REZ

- Include buffers around the reserves
- Need to exclude Brolga and threatened species hot spots north of the Glenelg Highway
- Need to remove the Bradvale and Mingay regions to avoid Brolga and threatened species hot spot within the REZ
- Include a buffer around Brolga population in Rokewood.

South West REZ

- There is a serious need to reconsider and reassess the South West REZ due to the Brolga and Red-tailed black cockatoo hotspots
- Removal of the Brolga and Red-tailed black cockatoo hotspots
- Removal of Mount Napier State Park from REZ
- Include buffers around the reserves.

Central North REZ

- Include a buffer around Brolga hotspot between just north of the Midland Highway, Girgarre-Rushworth Road and Heathcote-Rochester Road
- Include a buffer around the reserves, including the One Tree Swamp and Two tree Swamp Nature Conservation Reserve.

Gippsland REZ

- Include buffers around the reserves.

Gippsland Shoreline REZ

- Include buffers around the reserves.

Section 2: General high-level points

General high-level points

- Victoria is the most cleared State of habitat and native vegetation in Australia.
- New transmission lines must avoid all national parks and protected areas including nature conservation reserves and Trust for Nature sites.
- Transmission lines and associated work can cause habitat fragmentation. Habitat fragmentation is listed as a Potentially Threatening Processes under Victorian State law the Flora and Fauna Guarantee Act 1988.
- Transmission lines impact and fragment ecological functions and movements of wildlife. As well as cause direct mortality of some species and facilitate the spread of pest plants and animals.
- Greater stewardship of transmission line easements is required to reduce the impact of ecosystems and wildlife.
- Further development of existing transmission lines in national parks and protected areas must stay within the existing footprint of transmission lines through national parks and protected areas. There must not be new footprints created in these areas.
- To comply with the *Flora and Fauna Guarantee Act 1988*, it is essential that measures to reduce ecosystem fragmentation caused by transmission lines—such as rope bridges and bandicoot bungalows—are adequately funded,

installed, and maintained.

- We have concerns over the transmission infrastructure through other high value conservation areas like nature conservation reserves.
- We have concerns for the potential impact on reserves and threatened species like Brolga and Red-tailed black cockatoo, within the renewable energy zones (REZ), particularly the South West, Central North, Central Highlands and the Wimmera REZ's.
- We are disappointed with the 'avoid where necessary' and interpret this as a softening of past commitments and policies to keep renewable energy infrastructure outside of the national parks and the protected areas estate.
- It is important to implement measures that minimize impacts on local wildlife and ecosystems, including long-term and consistent weed and pest control, installation of rope bridges for arboreal species, provision of safe passage options for wildlife crossing cleared areas—such as Bandicoot bungalows and patches of suitable ground vegetation—and the use of markers on powerlines to make them more visible to flying birds.
- The Victorian Draft Transmission Line Plan does not provide enough detail to assess in detail potential impacts of transmission lines. It does highlight the key link between the transmission and proposed renewable energy zone, which are discussed in slightly more detail, though the ecological assessment is largely superficial and it is not clear how impacts on biodiversity values will be minimised.

In this submission, we outline key principles for strengthening the protection of biodiversity and protected areas, which should apply to both transmission corridors and Renewable Energy Zones (REZ), along with a more detailed consideration of the conservation values within these zones.

Draft proposed renewable energy zones

Figure 1: We have identified 7 draft proposed renewable energy zones across Victoria for onshore renewable energy and a shoreline renewable energy zone to coordinate offshore wind connections

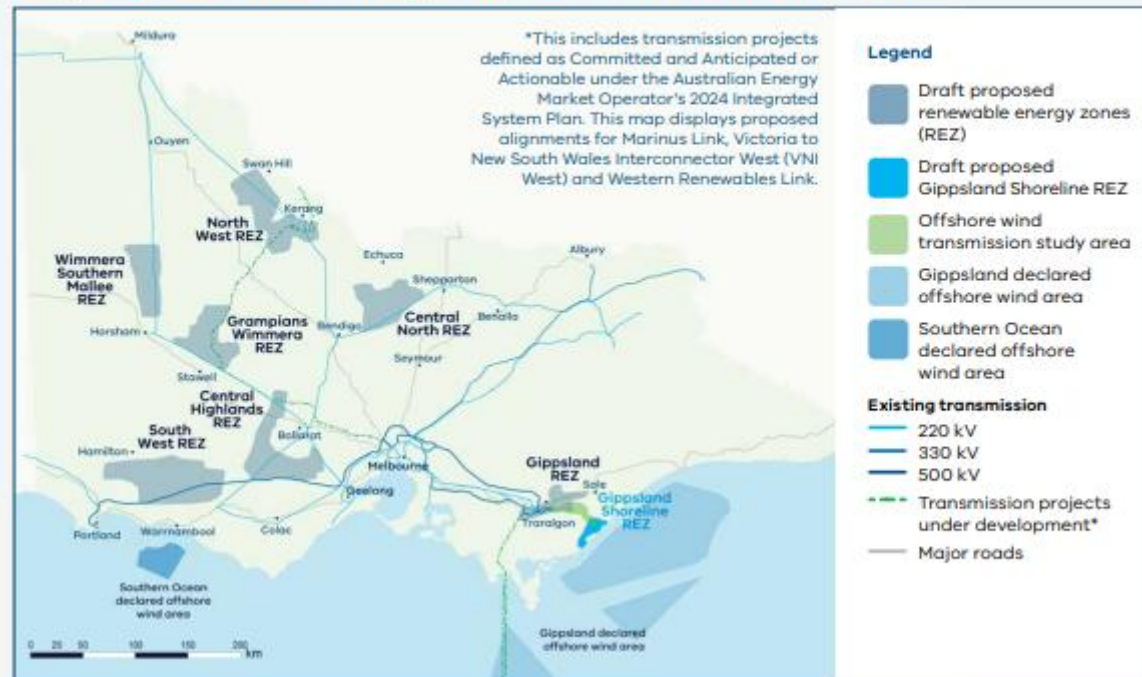


Figure 3: Map of the 7 VTP priority transmission programs



National Parks and Protected Areas National parks and protected areas like conservation reserves are the foundation of societies efforts to safeguard biodiversity, and the ecosystem functions they provide.

Those functions or services include food, clean water supply, medicines and protection from the impacts of natural disasters. Their role in helping mitigate and adapt to climate change is also increasingly recognised¹.

National parks and protected areas also protect the features of scenic, archaeological, geological, historic and scientific interest in those areas.

These areas also provide places of incredible natural beauty for the community to enjoy, recreate and visit away from the hustle and bustle of the built environment and urbanised landscapes and a place of rest for the human senses.

Polling conducted by the RedBridge Group reveals that over 80% of Victorians consider their National Parks to be important.² Key motivations for visiting more often include the desire for peace and quiet (53%), the opportunity to observe wildlife in their natural habitat (48%), confidence that all wildlife is protected (38%), and the appeal of unique natural features and scenic views (45%), among other reasons.

Polling done by Lonergan research in 2022 found that 71% of Australians say protection of nature is one of the most important uses of national parks and conservation areas and that half of Australians (55%) would be less likely to visit a national park if it had commercial infrastructure.³

The Victorian *National Parks Act 1975* legislates the need to protect, conserve, and enhance Victoria's national parks, ensuring the preservation of natural ecosystems, biodiversity, and cultural heritage for future generations. Importantly, the Act seeks to prevent activities that may damage park ecosystems and harm native wildlife.

The objectives of the National Parks Act 1975 are very clear as stated below:

¹ Effective protected areas. International Union for Conservation of Nature (IUCN). <https://iucn.org/our-work/topic/effective-protected-areas>

² RedBridge Group Report (2024) Victorian Great Forest National Park survey Prepared for the Wilderness Society and Victorian National Parks Association <https://vnpa.org.au/wp-content/uploads/2024/11/Victorian-Great-Forest-National-Park-survey-Oct-2024-RedBridge.pdf>

³ Lonergan Research report 2457 NPAC Polling commissioned by National Parks Australia Council (January 2022)

4 Objects of Act

The objects of this Act are—

- (a) to make provision, in respect of national parks, State parks, marine national parks and marine sanctuaries—
 - (i) for the preservation and protection of the natural environment including wilderness areas and remote and natural areas in those parks;
 - (ii) for the protection and preservation of indigenous flora and fauna and of features of scenic or archaeological, ecological, geological, historic or other scientific interest in those parks; and
 - (iii) for the study of ecology, geology, botany, zoology and other sciences relating to the conservation of the natural environment in those parks; and
 - (iv) for the responsible management of the land in those parks;

We welcome the exclusion of renewable energy infrastructure largely from protected areas including national, state and coastal parks, as stated in the *Development of wind energy facilities policy and planning* guidelines (Department of Transport and Planning 2023):

The guidelines state:

2.1.4 Exclusion of wind energy facilities in National Parks, State Parks, Coastal Parks and other high-quality environmental and landscape locations in the state.

5.1.3 Landscape and visual impact-landscape values associated with nearby parks described in a schedule to the National Parks Act 1975 or Ramsar wetlands.

It's important that this exclusion remains firm throughout planning and is extended to all official protected areas such as nature conservation reserves within the REZ and the transmission line infrastructure.

The heightened level of impact around protected areas such as national parks and reserves was also raised by DEECA in the *Draft Handbook for the development of renewable energy in Victoria: Guidance for the avoidance, minimisation, mitigation and offsetting / compensation of impacts on biodiversity* (DEECA 2025) which states:

Protected and conservation areas often host significant ecological and biodiversity communities. Even where a development is taking place on land with minimal biodiversity value, proximity to areas of significant biodiversity value may still mean that there is a heightened risk⁴.

International guidelines also support the sentiment for avoiding impacts in protected areas. The International Union for Conservation of Nature (IUCN) in its *Wildlife and power lines Guidelines for preventing and mitigating wildlife mortality associated with electricity distribution networks* (2022) (*The Technical guide*) highlights:

Electricity grid expansion is likely to have environmental costs; the scale of the impacts caused will depend on the effort put into avoiding, minimising or

⁴ PUBLIC CONSULTATION DRAFT - Handbook for the development of renewable energy in Victoria
Guidance for the avoidance, minimisation, mitigation and compensation of impacts on biodiversity

remedying them. Even 'clean' energy-related infrastructure is not exempt from generating adverse effects on nature, especially in sensitive or protected areas.

The technical guide provides the best available information on effective power line management from around the world to appropriately inform decision making and to reduce negative impacts on land use, landscapes, ecosystems and species and provides examples of avoiding and then minimising impacts on biodiversity from transmission lines.

It also states:

Prevention of wildlife electrocution in forested habitats begins with the proper planning and design of electric power lines. Critical considerations include the analysis of the species composition and behaviour of animals that live around the project area and in nearby protected areas, ecological corridors and environmentally fragile habitats. If necessary, infrastructure designs must be modified to account for the environmental fragility of these habitats.

In section 8.2 it recommends for an analysis of sensitive species (raptors, large birds, bats) and the existence of areas important for these species and protected areas. This must not be limited to only species listed under State and Commonwealth legislation as threatened, but all native wildlife.

The challenge with Victoria developing a sensitivity mapping tool, as recommended in the Technical Guide to help avoid sensitive species and areas, lies in the limitations of the Victorian Biodiversity Atlas (VBA), which provides planners and the public with outdated and incomplete data. To ensure effective sensitivity mapping, it's essential to incorporate additional data sources—such as the Atlas of Living Australia and iNaturalist—alongside the VBA to better identify and protect sensitive species and habitats.

To maintain the social licence of renewable energy projects and reduce the chance of conflict within the community there is a strong need to avoid placing new transmission infrastructure in national parks and other protected areas like nature conservation reserves. When working on or updating transmission lines in existing easements in protected areas, work should be limited to the existing footprint.

Under Australia's Strategy for the National Reserve System 2009-2030 all the state and territory governments and the Australian government have agreed to adopt international standards for the definition of a protected area and management categories used by the IUCN. IUCN protected area management categories classify protected areas according to their management objectives.

The categories are recognised by international bodies such as the United Nations and by many national governments as the global standard for defining and recording protected areas. In Victoria, many areas that are considered protected are not

protected under the national park act but under associated legislation such as Crown Land (Reserves) Act 1978.

The *Crown Land (Reserves) Act 1978* provides for the reservation, use and management of Crown land, either temporarily or permanently, for public purposes including for conservation, recreation, services and utilities.

While current planning documents avoid protected areas under the national parks act, it is important that conservation reserves and natural feature reserves are protected via the Crown Land (Reserves) Act. In some instances, conservation reserves are designated with stricter nature conservation purposes than national parks. e.g. IUCN Category 1a – Strict Nature Conservation Reserve. See figure 1 below.

While existing planning guidance recognises areas protected under the National Parks Act, it does not clearly include other significant protected areas like these nature conservation reserves and bushland reserves, which should receive the same level of recognition and protection.

See more info at Victorian Environmental Assessment Council Statewide Assessment of Public Land [here](#).

Figure 1. Public land use categories showing the strict nature conservation purposes of nature conservation reserves.

Public land use categories comprising the protected area system in Victoria with the most commonly assigned IUCN management category

Category	Sub-category	IUCN categories ^{1,2}
Terrestrial		
National park		II
State park		II
Wilderness park		Ib
Other park (conservation)	National Parks Act Schedule 3 park	II, III
	Coastal park	II, III
National heritage park		V
Nature conservation reserve *		Ia
Natural features reserve **	Bushland area/ reserve	III, IV
	Cave reserve	III
	Geological and geomorphological features area	III
	Natural and scenic features area	III
	Streamside area	III, IV
Marine		
Marine national park		II
Marine sanctuary		II, III
Multiple-use marine protected area	Marine and coastal park	III
	Marine park	VI
Overlay		
Reference area		Ia
Wilderness zone		Ib
Remote and natural area		Ib, II
Heritage river		II, III
Natural catchment area		Ib, II

* includes Trust for Nature protected area

** VEAC does not consider the sub-category of wildlife area (hunting permitted) i.e. game reserve to be a protected area, although the category is sometimes reported as an IUCN category VI reserve.

Figure 2: Definition of IUCN categories⁵

IUCN protected area categories

I(a) Strict Nature Reserve

Category I(a) are strictly protected areas set aside to protect biodiversity and also possibly geological/geomorphical features, where human visitation, use and impacts are strictly controlled and limited to ensure protection of the conservation values. Such protected areas can serve as indispensable reference areas for scientific research and monitoring.

I(b) Wilderness Area

Category I(b) protected areas are usually large unmodified or slightly modified areas, retaining their natural character and influence without permanent or significant human habitation, which are protected and managed so as to preserve their natural condition.

II National Park

Category II protected areas are large natural or near natural areas set aside to protect large-scale ecological processes, along with the complement of species and ecosystems characteristic of the area, which also provide a foundation for environmentally and culturally compatible, spiritual, scientific, educational, recreational, and visitor opportunities.

III Natural Monument or Feature

Category III protected areas are set aside to protect a specific natural monument, which can be a landform, sea mount, submarine cavern, geological feature such as a cave or even a living feature such as an ancient grove. They are generally quite small protected areas and often have high visitor value.

IV Habitat/Species Management Area

Category IV protected areas aim to protect particular species or habitats and management reflects this priority. Many Category IV protected areas will need regular, active interventions to address the requirements of particular species or to maintain habitats, but this is not a requirement of the category.

V Protected Landscape/ Seascape

A protected area where the interaction of people and nature over time has produced an area of distinct character with significant, ecological, biological, cultural and scenic value: and where safeguarding the integrity of this interaction is vital to protecting and sustaining the area and its associated nature conservation and other values.

VI Protected area with sustainable use of natural resources

Category VI protected areas conserve ecosystems and habitats together with associated cultural values and traditional natural resource management systems. They are generally large, with most of the area in a natural condition, where a proportion is under sustainable natural resource management and where low-level non-industrial use of natural resources compatible with nature conservation is seen as one of the main aims of the area.

⁵ Effective protected areas. International Union for Conservation of Nature (IUCN). <https://iucn.org/our-work/topic/effective-protected-areas>

Section 3: Brolga

Brolga (*Grus rubicunda*)

Brolga (*Grus rubicunda*) are a large, iconic bird found only in Australia and New Guinea. They are common in northern Australia but listed as endangered in Victoria under the Victorian Flora and Fauna Guarantee Act 1988⁶

Due to their size Brolga are susceptible to death caused by collision and electrocution by transmission lines, this has been observed in southwest Victoria with relatively low amount of transmission lines in the landscape⁷

The Southern Brolga are genetically distinct from other populations across Australia^[8]. If the Victorian Brolga population is an isolated gene pool, then the threat of inbreeding is unlikely to be alleviated by natural gene flow from northern populations. Consequently, conservation efforts should be geared toward securing wetland habitats, increasing local population sizes, and preserving genetic diversity^[9]

It is essential to avoid locating above ground transmission lines within 5 km of Brolga home ranges (as defined in the *Interim Guidelines for the Assessment, Avoidance, Mitigation and Offsetting of Potential Wind Farm Impacts on the Victorian Brolga Population*, 2011 Revision 1, Department of Sustainability and Environment).

Above ground transmission infrastructure presents an unacceptable risk to Brolgas, significantly increasing the likelihood of fatal collisions.

Expanding transmission infrastructure through Brolga habitat is likely to result in increased mortality and further fragmentation of their habitat and genetic diversity.

It is critical that transmission line development avoids key Brolga nesting and breeding sites, as well as established home ranges, in regions where the species is known to occur.

⁶ Brolga: Improving Knowledge of the endangered brolga in Victoria. [Arthur Rylah Institute](https://www.ari.vic.gov.au/research/threatened-plants-and-animals/animals/brolga).
<https://www.ari.vic.gov.au/research/threatened-plants-and-animals/animals/brolga>

⁸ Goldstraw, P. W., and Du Guesclin, P. B. (1991). Bird casualties from collisions with a 500 kv transmission line in southwestern Victoria, Australia. In: *Proceedings from the 1987 International Crane Workshop*, 219-224.

^[9] Miller, A (2016). The development of microsatellite loci through next generation sequencing, and a preliminary assessment of population genetic structure for the iconic Australian crane, Brolga (*Antigone rubicunda*). Nature Glenelg Trust, Warrnambool, Victoria

Four Renewable Energy Zones (REZs) — Grampians, Wimmera, Central Highlands, and South West — significantly overlap with vital Brolga habitat. Maps below show Brolga records sourced from the Victorian Government's VBA dataset.

Brolga Recommendations

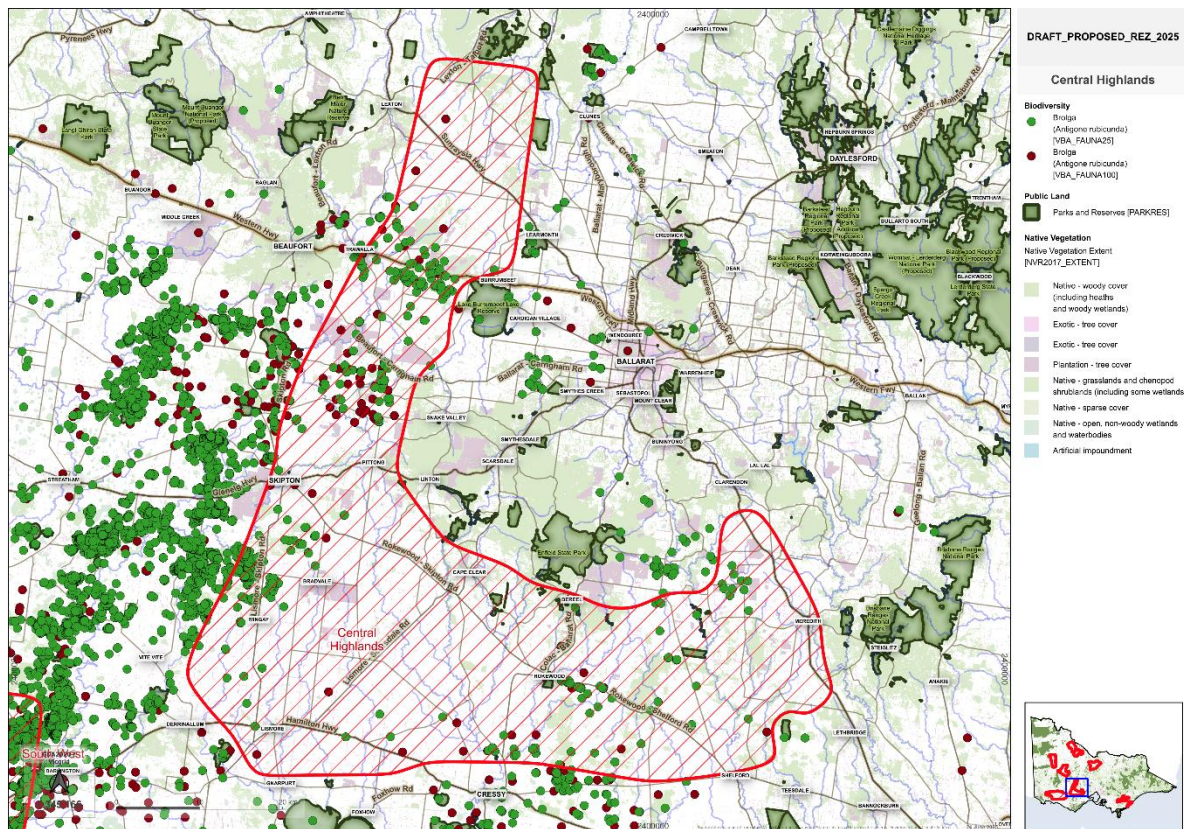
- Include a buffer zone of 5km around Brolga breeding wetlands on public and private land as a minimum.
- If avoiding Brolga home ranges and breeding wetlands is unable to occur, transmission lines must be placed under ground.
- Small changes in hydrological flows of wetlands caused by above ground and below ground have the potential to severely impact Brolga nesting and feeding and must be mitigated against.
- Grampians Wimmera REZ: include buffers around Brolga the hot spot north of the Wimmera Highway (see map below)
- Central Highlands REZ: remove Brolga and threatened species hot spots north of the Glenelg Highway, remove REZ from Bradvale and Mingay region to avoid Brolga and threatened species hot spots, include a buffer around the Brolga population in Rokewood (see map below).
- South West REZ: there is a serious need to reassess and finely assess the South West REZ, with such a high density of Brolga in this area the increased mortality caused by transmission lines and associated infrastructure provides an unacceptable risk to Brolga.

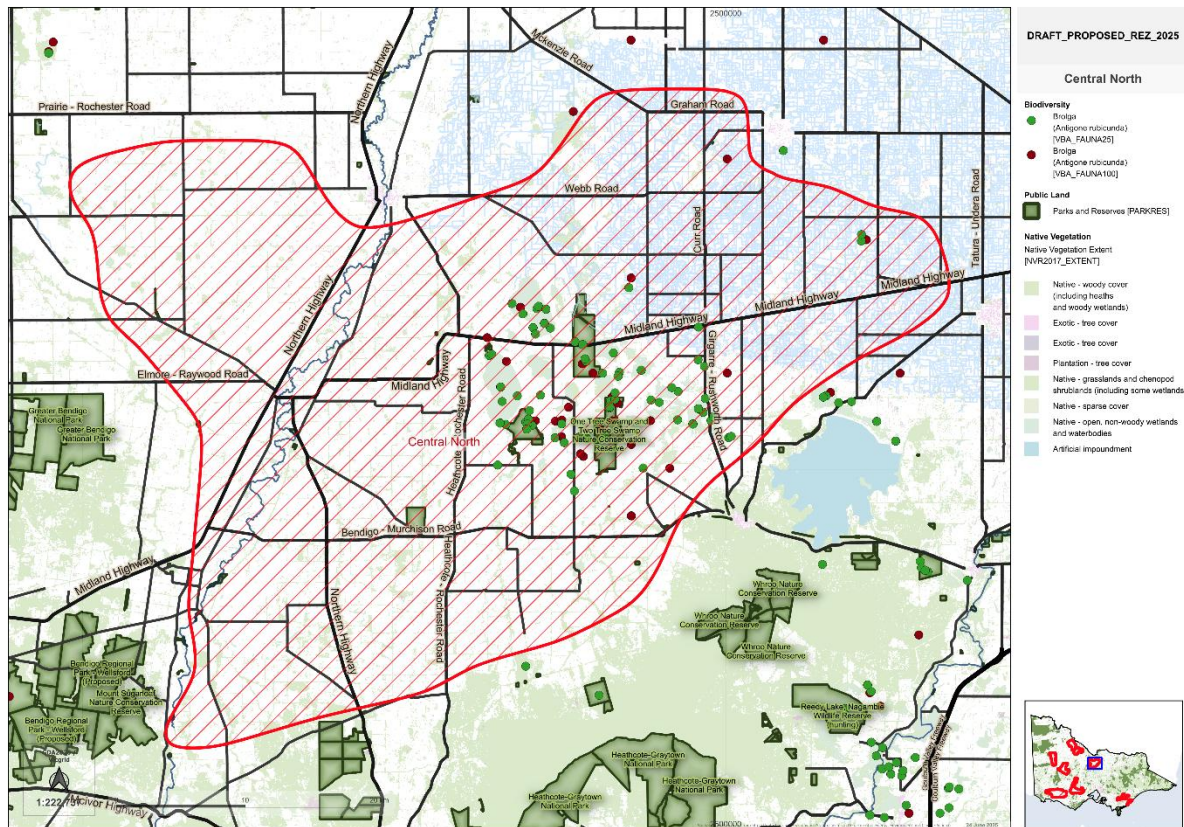
Central North REZ: exclusion of significant Brolga population based around Gaynor Swamp Wildlife Reserve, One Tree Swamp and Two Tree Swamp Nature Conservation Reserve, Wallenjoie Swamp Wildlife Reserve.



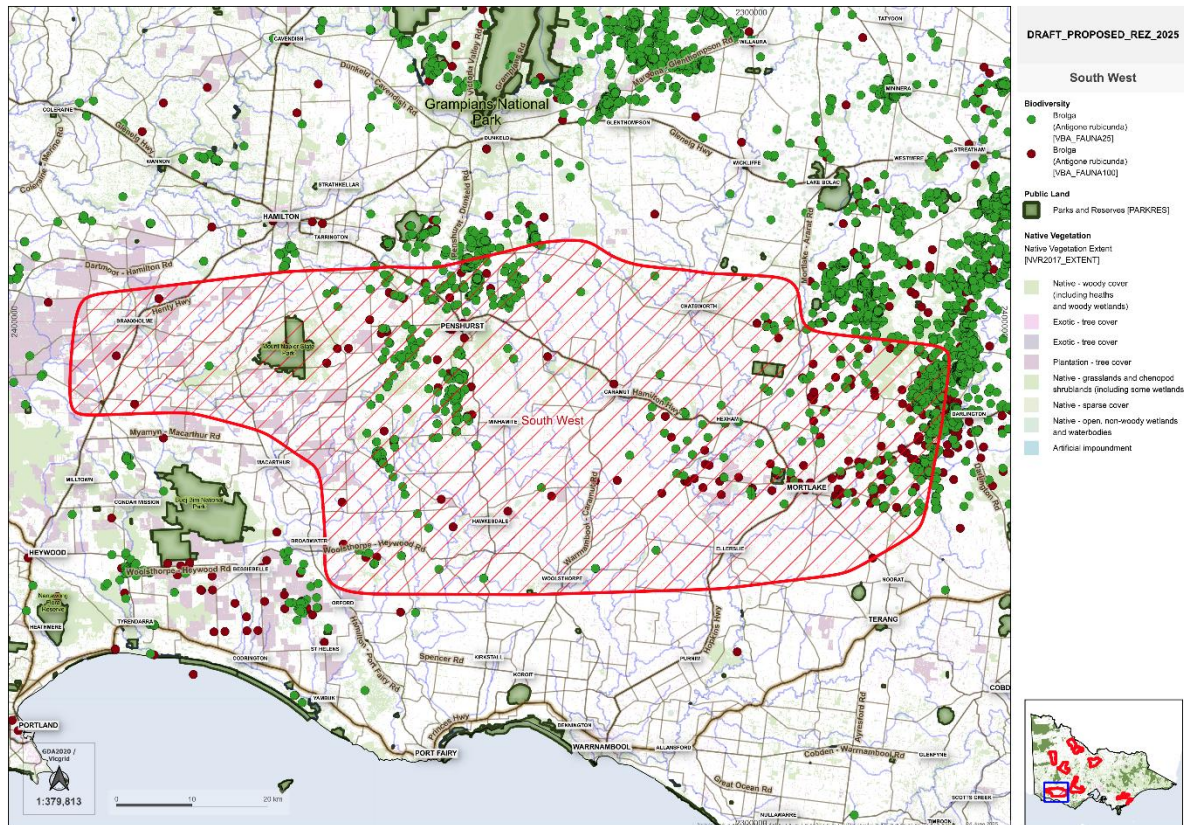
credit: Photo by Nevil Amos (ARI)

Brolga Maps

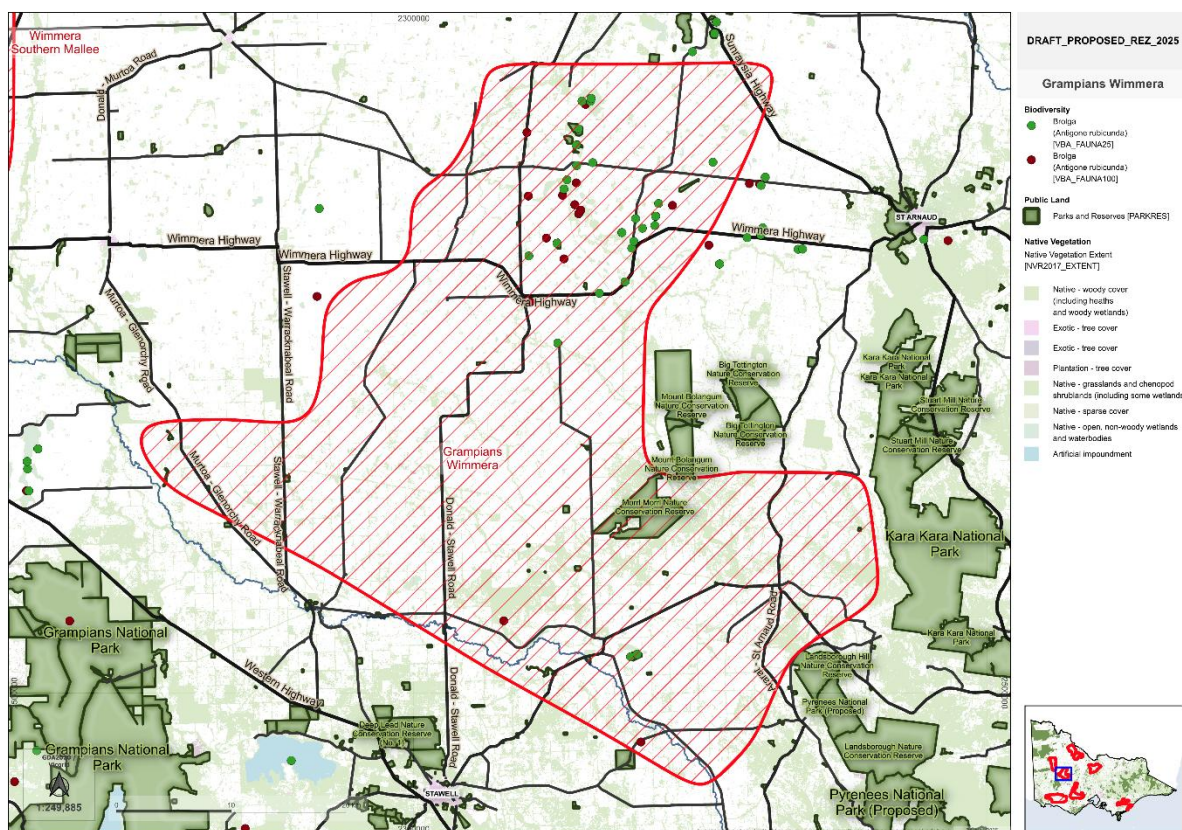




Map 2: Central North REZ overlapping with the Brolga hotspot and parks and reserves.

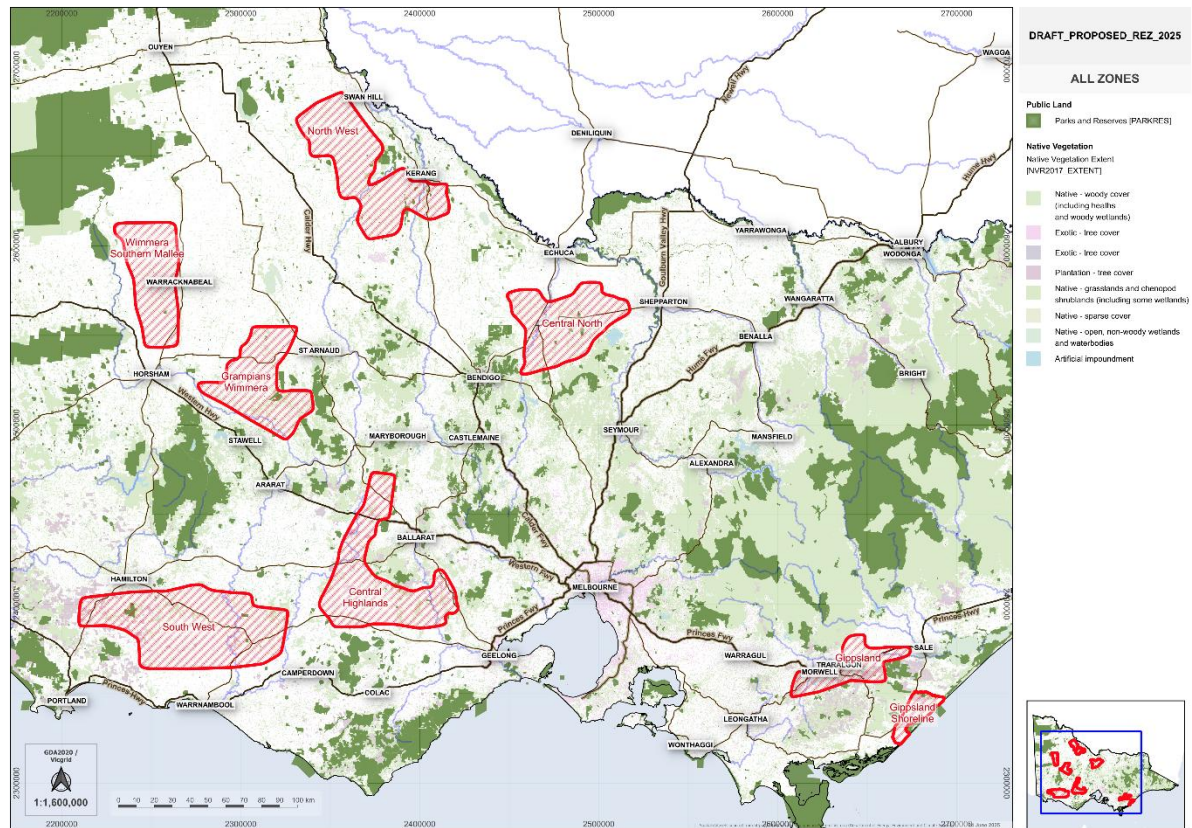


Map 3: South West REZ overlapping with the Brolga hotspots and parks and reserves.



Map 4: Grampians Wimmera REZ overlapping with the Brolga hotspot and parks and reserves.

Section 4: Detailed commentary on the impacts of the Renewable Energy Zone and Transmission Network on Conservation Reserves and Biodiversity



Map 5: statewide overview of parks and reserves within the proposed eight renewable energy zones.

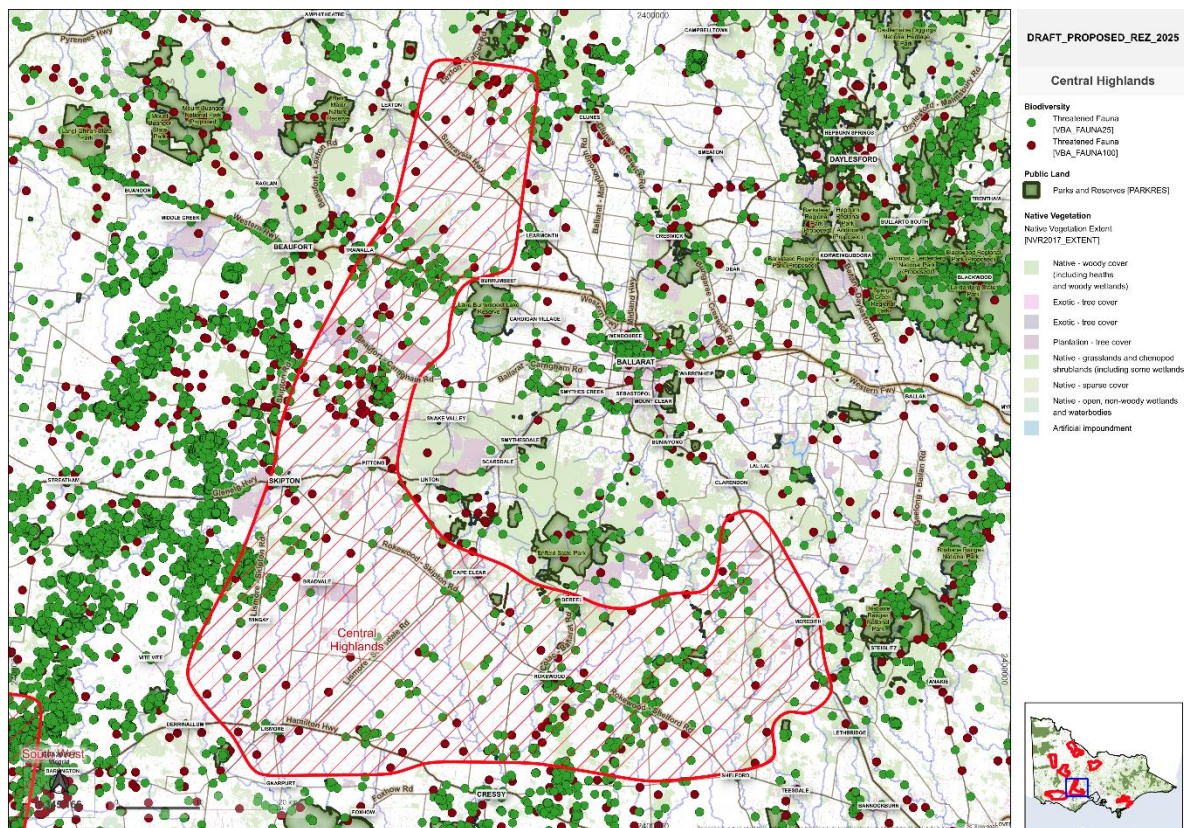
Table 1. Numbers of reserves within the eight renewable energy zones.

Row Labels	count of reserves
Central Highlands	36
Central North	64
Gippsland	11
Gippsland Shoreline	24
Grampians Wimmera	48
North West	43
South West	20
Wimmera Southern Mallee	11
Grand Total	257

Central Highlands REZ

Recommendations

- Include buffers around the reserves.
- Need to exclude Brolga and threatened species hot spots north of the Glenelg Highway
- Need to remove the Bradvale and Mingay regions to avoid Brolga and threatened species hot spot within the REZ.
- Include a buffer around Brolga population in Rokewood.



Map 6: Central Highlands REZ overlapping with the threatened species and parks and reserves.

Table 2: List of all reserves of the Central Highlands

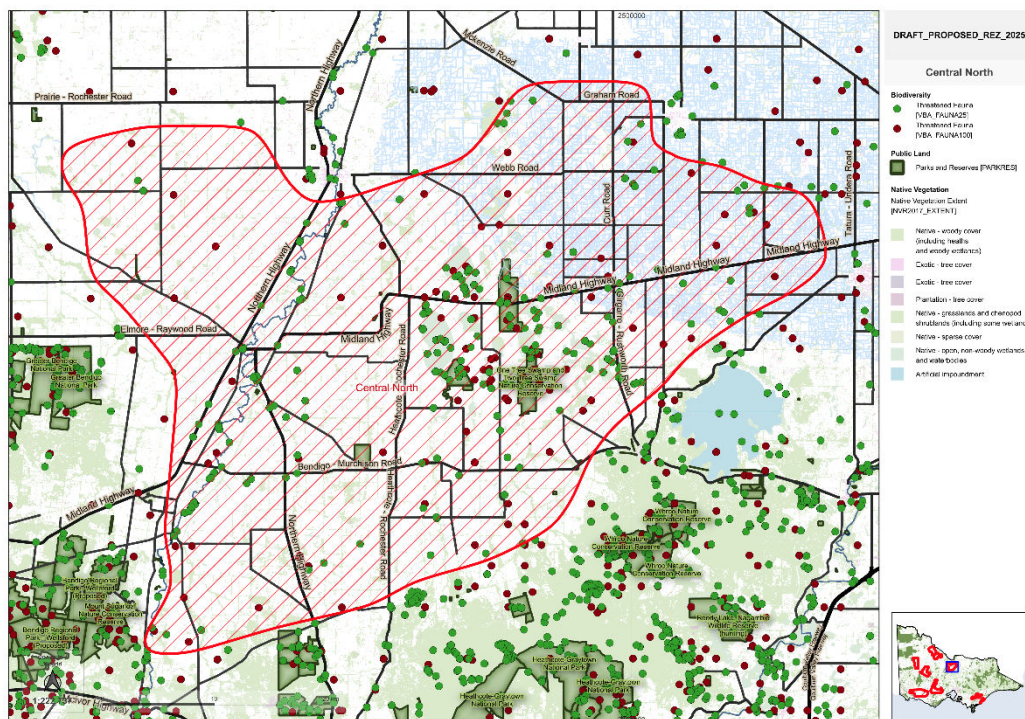
NAME	AREA_TYPE
Corindhap Nature Conservation Reserve	NATURE CONSERVATION RESERVE
Cargerie I42 Bushland Reserve	NATURAL FEATURES RESERVE - BUSHLAND RESERVE
Cargerie I42 Bushland Reserve	NATURAL FEATURES RESERVE - BUSHLAND RESERVE
Warrambine Flora Reserve	NATURE CONSERVATION RESERVE - FLORA RESERVE
Illabrook Rail Line Nature Conservation Reserve	NATURE CONSERVATION RESERVE
Mount Bute Scenic Reserve	NATURAL FEATURES RESERVE - SCENIC RESERVE
Dereel H27 Bushland Reserve	NATURAL FEATURES RESERVE - BUSHLAND RESERVE
Dereel H25 Bushland Reserve	NATURAL FEATURES RESERVE - BUSHLAND RESERVE
Dereel Lagoon Wildlife Reserve (no hunting)	NATURE CONSERVATION RESERVE - WILDLIFE RESERVE (NO HUNTING)
Karuc-a-ruc Creek Streamside Reserve	NATURAL FEATURES RESERVE - STREAMSIDE RESERVE
Mount Mercer Nature Conservation Reserve	NATURE CONSERVATION RESERVE
Dereel H28 Bushland Reserve	NATURAL FEATURES RESERVE - BUSHLAND RESERVE
Happy Valley Crossing Streamside Reserve	NATURAL FEATURES RESERVE - STREAMSIDE RESERVE
Commeralghip Flora Reserve	NATURE CONSERVATION RESERVE - FLORA RESERVE
Skipton Court House Historic Reserve	HISTORIC RESERVE
Corindhap Nature Conservation Reserve	NATURE CONSERVATION RESERVE
Dereel H24 Bushland Reserve	NATURAL FEATURES RESERVE - BUSHLAND RESERVE
Corindhap Nature Conservation Reserve	NATURE CONSERVATION RESERVE
Illabrook Rail Line Nature Conservation Reserve	NATURE CONSERVATION RESERVE
Happy Valley Crossing Streamside Reserve	NATURAL FEATURES RESERVE - STREAMSIDE RESERVE
Cargerie I43 Bushland Reserve	NATURAL FEATURES RESERVE - BUSHLAND RESERVE
Woody Yallock River, Pitfield Streamside Reserve	NATURAL FEATURES RESERVE - STREAMSIDE RESERVE
Illabarook Grassland Flora Reserve	NATURE CONSERVATION RESERVE - FLORA RESERVE
Dereel H24 Bushland Reserve	NATURAL FEATURES RESERVE - BUSHLAND RESERVE
Mount Beckworth Scenic Reserve	NATURAL FEATURES RESERVE - SCENIC RESERVE
Bulldog Historic Reserve	HISTORIC RESERVE
Dereel Lagoon Wildlife Reserve (no hunting)	NATURE CONSERVATION RESERVE - WILDLIFE RESERVE (NO HUNTING)

Skipton Streamside Reserve	NATURAL FEATURES RESERVE - STREAMSIDE RESERVE
Corindhap Nature Conservation Reserve	NATURE CONSERVATION RESERVE
Cargerie I42 Bushland Reserve	NATURAL FEATURES RESERVE - BUSHLAND RESERVE
Cargerie I42 Bushland Reserve	NATURAL FEATURES RESERVE - BUSHLAND RESERVE
Cressy Streamside Reserve	NATURAL FEATURES RESERVE - STREAMSIDE RESERVE
Rokewood Common Nature Conservation Reserve	NATURE CONSERVATION RESERVE
Cargerie I42 Bushland Reserve	NATURAL FEATURES RESERVE - BUSHLAND RESERVE
Cargerie I42 Bushland Reserve	NATURAL FEATURES RESERVE - BUSHLAND RESERVE
Rokewood Common Nature Conservation Reserve	NATURE CONSERVATION RESERVE

Central North REZ

Recommendations

- Include a buffer around Brolga hotspot between just north of the Midland Highway, Girgarre-Rushworth Road and Heathcote-Rochester Road
- Include a buffer around the reserves, including the One Tree Swamp and Two tree Swamp Nature Conservation Reserve



Map 7: Central North REZ overlapping with the threatened species and parks and reserves.

Table 3: List of all reserves of the Central North

NAME	AREA_TYPE
Gaynor Swamp Wildlife Reserve (hunting)	NATURAL FEATURES RESERVE - WILDLIFE RESERVE (HUNTING)
Corop Cemetery Bushland Reserve	NATURAL FEATURES RESERVE - BUSHLAND RESERVE
Corop Wildlife Reserve (hunting)	NATURAL FEATURES RESERVE - WILDLIFE RESERVE (HUNTING)
Rushworth - Colbinabbin rail line (VicTrack) Bushland Reserve	NATURE CONSERVATION RESERVE
Elmore-Cohuna rail line Bushland Reserve	NATURAL FEATURES RESERVE - BUSHLAND RESERVE
Mansfield Swamp Wildlife Reserve (hunting)	NATURAL FEATURES RESERVE - WILDLIFE RESERVE (HUNTING)
Rushworth - Colbinabbin rail line (VicTrack) Bushland Reserve	NATURE CONSERVATION RESERVE
Gaynor Swamp Wildlife Reserve (hunting)	NATURAL FEATURES RESERVE - WILDLIFE RESERVE (HUNTING)
One Tree Swamp and Two Tree Swamp Nature Conservation Reserve	NATURE CONSERVATION RESERVE
Rushworth - Colbinabbin rail line (VicTrack) Bushland Reserve	NATURE CONSERVATION RESERVE
Rushworth - Colbinabbin rail line (VicTrack) Bushland Reserve	NATURE CONSERVATION RESERVE
Rushworth - Colbinabbin rail line (VicTrack) Bushland Reserve	NATURE CONSERVATION RESERVE
Gaynor Swamp Wildlife Reserve (hunting)	NATURAL FEATURES RESERVE - WILDLIFE RESERVE (HUNTING)
Rushworth - Colbinabbin rail line (VicTrack) Bushland Reserve	NATURE CONSERVATION RESERVE
Rushworth - Colbinabbin rail line (VicTrack) Bushland Reserve	NATURE CONSERVATION RESERVE
Rushworth - Colbinabbin rail line (VicTrack) Bushland Reserve	NATURE CONSERVATION RESERVE
Rushworth - Colbinabbin rail line (VicTrack) Bushland Reserve	NATURE CONSERVATION RESERVE
Mansfield Swamp Wildlife Reserve (hunting)	NATURAL FEATURES RESERVE - WILDLIFE RESERVE (HUNTING)
One Tree Swamp and Two Tree Swamp Nature Conservation Reserve	NATURE CONSERVATION RESERVE
One Tree Swamp and Two Tree Swamp Nature Conservation Reserve	NATURE CONSERVATION RESERVE

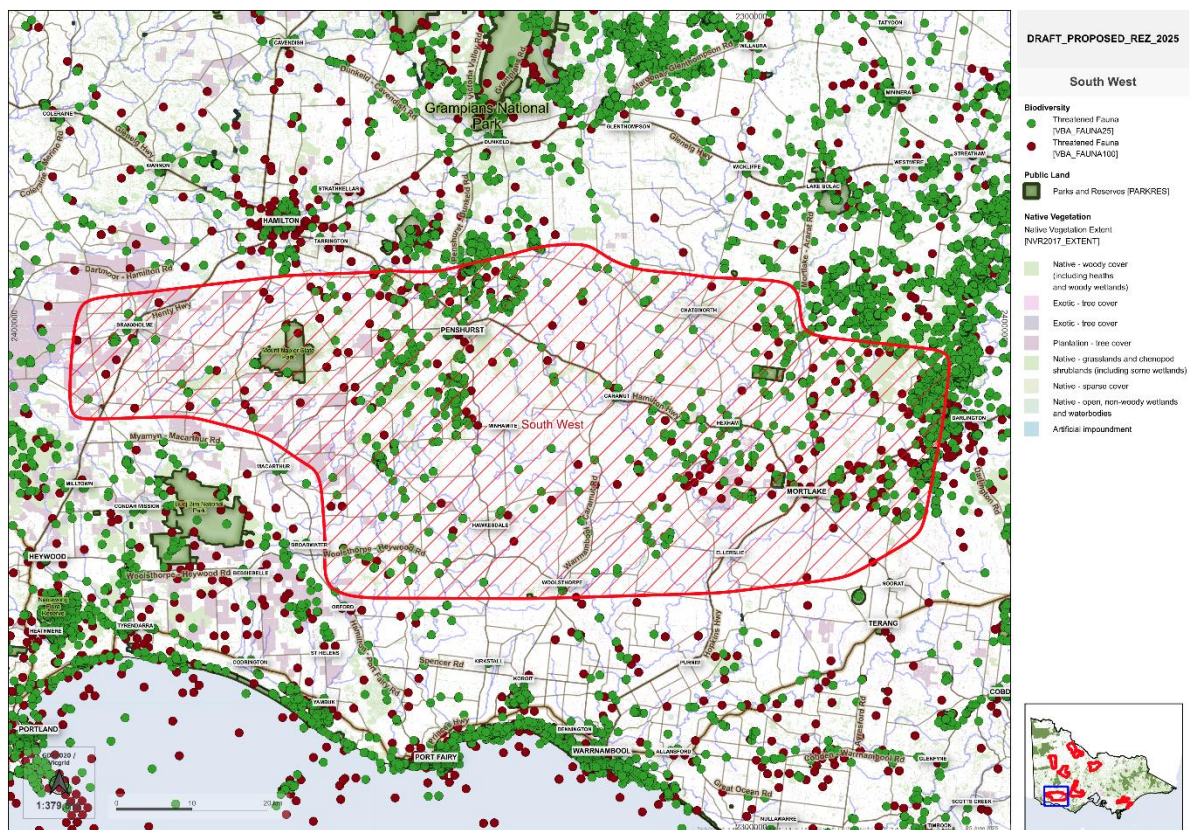
Corop Wildlife Reserve (hunting)	NATURAL FEATURES RESERVE - WILDLIFE RESERVE (HUNTING)
Rushworth - Colbinabbin rail line (VicTrack) Bushland Reserve	NATURE CONSERVATION RESERVE
Wallenjoie Swamp Wildlife Reserve (hunting)	NATURAL FEATURES RESERVE - WILDLIFE RESERVE (HUNTING)
Runnymede Bushland Reserve	NATURAL FEATURES RESERVE - BUSHLAND RESERVE
One Tree Swamp and Two Tree Swamp Nature Conservation Reserve	NATURE CONSERVATION RESERVE
Runnymede Bushland Reserve	NATURAL FEATURES RESERVE - BUSHLAND RESERVE
Rushworth - Colbinabbin rail line (VicTrack) Bushland Reserve	NATURE CONSERVATION RESERVE
Bonn Streamside Reserve	NATURAL FEATURES RESERVE - STREAMSIDE RESERVE
Runnymede Nature Conservation Reserve	NATURE CONSERVATION RESERVE
Rushworth - Colbinabbin rail line (VicTrack) Bushland Reserve	NATURE CONSERVATION RESERVE
One Tree Swamp and Two Tree Swamp Nature Conservation Reserve	NATURE CONSERVATION RESERVE
Picaninny Creek Streamside Reserve	NATURAL FEATURES RESERVE - STREAMSIDE RESERVE
Rushworth - Colbinabbin rail line (VicTrack) Bushland Reserve	NATURE CONSERVATION RESERVE
Wanalta Bushland Reserve	NATURAL FEATURES RESERVE - BUSHLAND RESERVE
Rushworth - Colbinabbin rail line (VicTrack) Bushland Reserve	NATURE CONSERVATION RESERVE
Rushworth - Colbinabbin rail line (VicTrack) Bushland Reserve	NATURE CONSERVATION RESERVE
Wanalta Weir Historic & Cultural Features Res.	HISTORIC RESERVE
Rushworth - Colbinabbin rail line (VicTrack) Bushland Reserve	NATURE CONSERVATION RESERVE
Rushworth - Colbinabbin rail line (VicTrack) Bushland Reserve	NATURE CONSERVATION RESERVE
Runnymede Bushland Reserve	NATURAL FEATURES RESERVE - BUSHLAND RESERVE
Campaspe River K39 Streamside Reserve	NATURAL FEATURES RESERVE - STREAMSIDE RESERVE
Gaynor Swamp Wildlife Reserve (hunting)	NATURAL FEATURES RESERVE - WILDLIFE RESERVE (HUNTING)

Kyabram Scobie Rd Bushland Reserve	NATURAL FEATURES RESERVE - BUSHLAND RESERVE
Rushworth - Colbinabbin rail line (VicTrack) Bushland Reserve	NATURE CONSERVATION RESERVE
Campaspe River K39 Streamside Reserve	NATURAL FEATURES RESERVE - STREAMSIDE RESERVE
Rushworth - Colbinabbin rail line (VicTrack) Bushland Reserve	NATURE CONSERVATION RESERVE
One Tree Swamp and Two Tree Swamp Nature Conservation Reserve	NATURE CONSERVATION RESERVE
Elmore-Cohuna rail line Bushland Reserve	NATURAL FEATURES RESERVE - BUSHLAND RESERVE
Rushworth - Colbinabbin rail line (VicTrack) Bushland Reserve	NATURE CONSERVATION RESERVE
Rushworth - Colbinabbin rail line (VicTrack) Bushland Reserve	NATURE CONSERVATION RESERVE
One Tree Swamp and Two Tree Swamp Nature Conservation Reserve	NATURE CONSERVATION RESERVE
Mansfield Swamp Wildlife Reserve (hunting)	NATURAL FEATURES RESERVE - WILDLIFE RESERVE (HUNTING)
Mansfield Swamp Wildlife Reserve (hunting)	NATURAL FEATURES RESERVE - WILDLIFE RESERVE (HUNTING)
Corop Wildlife Reserve (hunting)	NATURAL FEATURES RESERVE - WILDLIFE RESERVE (HUNTING)
Elmore-Cohuna rail line Bushland Reserve	NATURAL FEATURES RESERVE - BUSHLAND RESERVE
Rushworth - Colbinabbin rail line (VicTrack) Bushland Reserve	NATURE CONSERVATION RESERVE
Runnymede Bushland Reserve	NATURAL FEATURES RESERVE - BUSHLAND RESERVE
Runnymede Streamside Reserve	NATURAL FEATURES RESERVE - STREAMSIDE RESERVE
Corop Bushland Reserve	NATURAL FEATURES RESERVE - BUSHLAND RESERVE
Barnadown Streamside Reserve	NATURAL FEATURES RESERVE - STREAMSIDE RESERVE
Rushworth - Colbinabbin rail line (VicTrack) Bushland Reserve	NATURE CONSERVATION RESERVE
Corop Wildlife Reserve (hunting)	NATURAL FEATURES RESERVE - WILDLIFE RESERVE (HUNTING)
English Bridge Streamside Reserve	NATURAL FEATURES RESERVE - STREAMSIDE RESERVE

South West REZ

Recommendations

- Due to the significant values in this proposed REZ, there is a serious need to reconsider and reassess this REZ.
- Removal of the Brolga and Red-tailed black cockatoo hotspots.
- Removal of Mount Napier State Park from REZ.
- Include buffers around the reserves.



Map 8: South West REZ overlapping with the threatened species and parks and reserves.

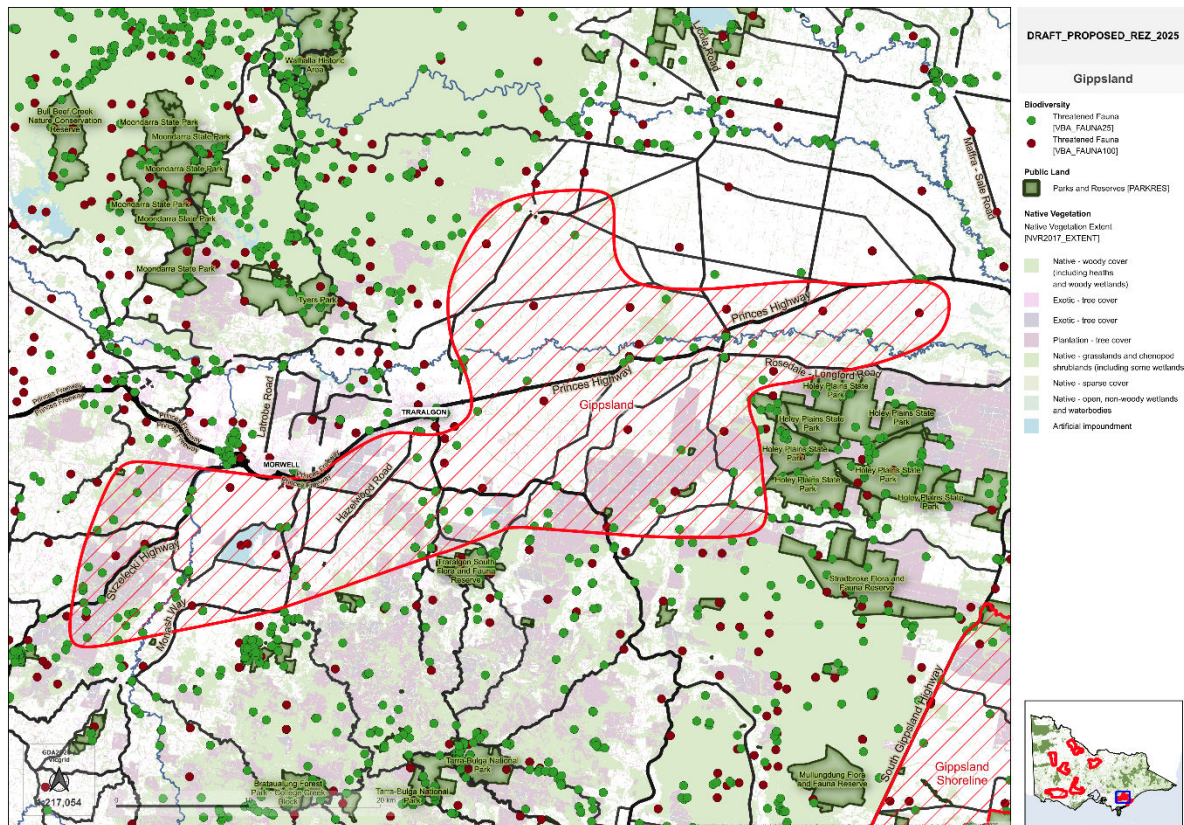
Table 4: List of all reserves of the South West REZ

NAME	AREA_TYPE
Greenhills Bushland Reserve	NATURAL FEATURES RESERVE - BUSHLAND RESERVE
Yatmerone Swamp Wildlife Reserve (no hunting)	NATURE CONSERVATION RESERVE - WILDLIFE RESERVE (NO HUNTING)
Mortlake Common Flora Reserve	NATURE CONSERVATION RESERVE - FLORA RESERVE
Cobra Killuc Wildlife Reserve (no hunting)	NATURE CONSERVATION RESERVE - WILDLIFE RESERVE (NO HUNTING)
Cobra Killuc Wildlife Reserve (no hunting)	NATURE CONSERVATION RESERVE - WILDLIFE RESERVE (NO HUNTING)
Mount Napier State Park	STATE PARK - SCHEDULE 2B, NATIONAL PARKS ACT
Lake Barnie Buloke Wildlife Reserve (hunting)	NATURAL FEATURES RESERVE - WILDLIFE RESERVE (HUNTING)
Tabor (Buckleys) Swamp Wildlife Reserve (hunting)	NATURAL FEATURES RESERVE - WILDLIFE RESERVE (HUNTING)
Cobra Killuc Wildlife Reserve (no hunting)	NATURE CONSERVATION RESERVE - WILDLIFE RESERVE (NO HUNTING)
Yatchaw Sandpit Bushland Reserve	NATURAL FEATURES RESERVE - BUSHLAND RESERVE
Mount Napier State Park	STATE PARK - SCHEDULE 2B, NATIONAL PARKS ACT
Tabor (Buckleys) Swamp Wildlife Reserve (hunting)	NATURAL FEATURES RESERVE - WILDLIFE RESERVE (HUNTING)
Mount Napier State Park	STATE PARK - SCHEDULE 2B, NATIONAL PARKS ACT
Bransholme Nature Conservation Reserve	NATURE CONSERVATION RESERVE
Mortlake N16 Lake Reserve	NATURAL FEATURES RESERVE - LAKE RESERVE
Mortlake N17 Lake Reserve	NATURAL FEATURES RESERVE - LAKE RESERVE
Hexham School Historic Reserve	HISTORIC RESERVE
Woolsthorpe Nature Conservation Reserve	NATURE CONSERVATION RESERVE
Lake Tim Dunn Lake Reserve	NATURAL FEATURES RESERVE - LAKE RESERVE
Mortlake N16 Lake Reserve	NATURAL FEATURES RESERVE - LAKE RESERVE

Gippsland REZ

Recommendations

- Include buffers around the reserves.



Map 9: Gippsland REZ overlapping with threatened species and parks and reserves.

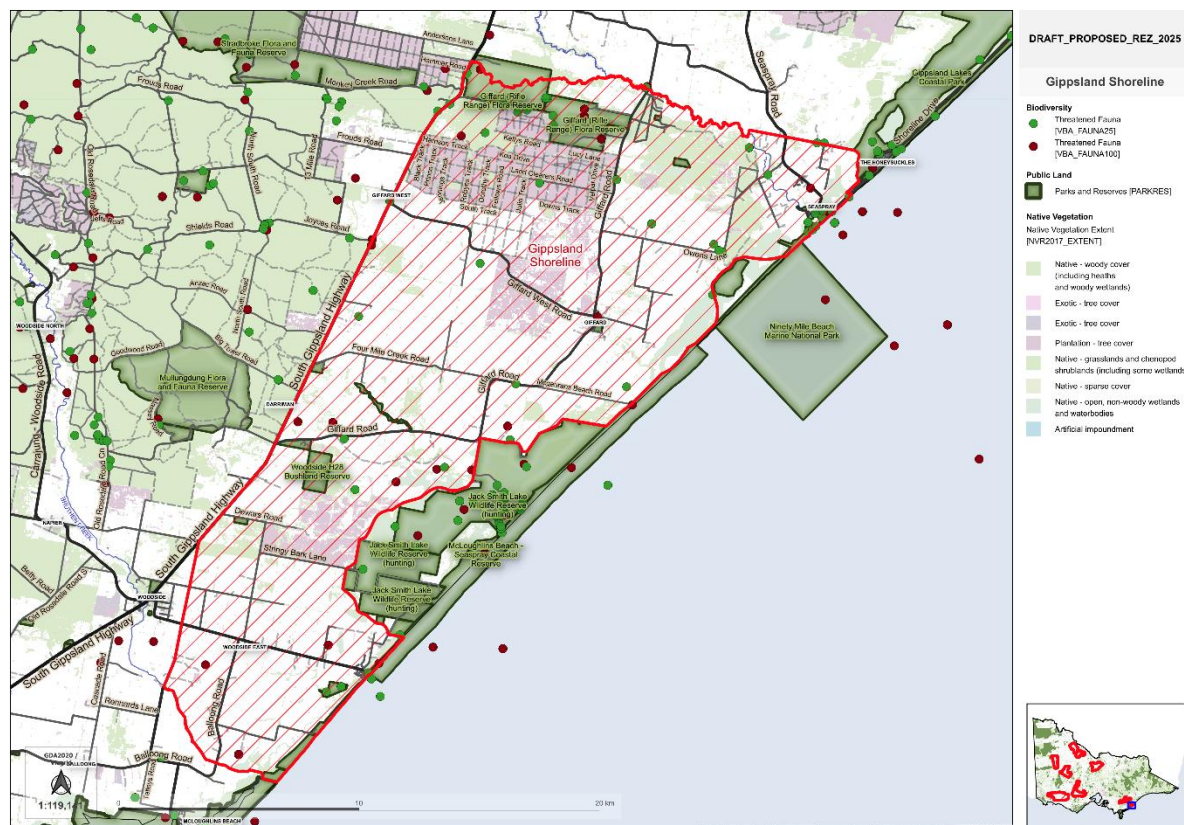
Table 5: List of all reserves of Gippsland

NAME	AREA_TYPE
Merrimans Creek Flora Reserve	NATURE CONSERVATION RESERVE - FLORA RESERVE
Toongabbie Bushland Reserve	NATURAL FEATURES RESERVE - BUSHLAND RESERVE
Holey Plains State Park	STATE PARK - SCHEDULE 2B, NATIONAL PARKS ACT
Gormandale Flora Reserve	NATURE CONSERVATION RESERVE - FLORA RESERVE
Holey Plains State Park	STATE PARK - SCHEDULE 2B, NATIONAL PARKS ACT
Coalville G219 Bushland Reserve	NATURAL FEATURES RESERVE - BUSHLAND RESERVE
Gormandale Flora Reserve	NATURE CONSERVATION RESERVE - FLORA RESERVE
Traralgon South Flora Reserve	NATURE CONSERVATION RESERVE - FLORA RESERVE
Toongabbie Mechanics Institute Historic Reserve	HISTORIC RESERVE
Rosedale Bushland Reserve	NATURAL FEATURES RESERVE - BUSHLAND RESERVE
Holey Plains State Park	STATE PARK - SCHEDULE 2B, NATIONAL PARKS ACT

Gippsland Shoreline REZ

Recommendations

- Include buffers around the reserves.



Map 10: Gippsland Shoreline REZ overlapping with threatened species and parks and reserves.

Table 6: List of all reserves of the Gippsland Shoreline

NAME	AREA_TYPE
Fresh-water Swamp, Woodside Beach Wildlife Reserve (hunting)	NATURAL FEATURES RESERVE - WILDLIFE RESERVE (HUNTING)
Giffard H30 Bushland Reserve	NATURAL FEATURES RESERVE - BUSHLAND RESERVE
Seaspray Reserves	COASTAL RESERVE
Seaspray Reserves	COASTAL RESERVE
Darriman H29 Bushland Reserve	NATURAL FEATURES RESERVE - BUSHLAND RESERVE

Giffard (Rifle Range) Flora Reserve	NATURE CONSERVATION RESERVE - FLORA RESERVE
Gippsland Lakes Coastal Park	OTHER PARK - SCHEDULE 3, NATIONAL PARKS ACT
Woodside H28 Bushland Reserve	NATURAL FEATURES RESERVE - BUSHLAND RESERVE
Seaspray Reserves	COASTAL RESERVE
Seaspray Reserves	COASTAL RESERVE
Giffard H31 Bushland Reserve	NATURAL FEATURES RESERVE - BUSHLAND RESERVE
Darriman H33 Bushland Reserve	NATURAL FEATURES RESERVE - BUSHLAND RESERVE
Warrigal Creek Streamside Reserve	NATURAL FEATURES RESERVE - STREAMSIDE RESERVE
Nooramunga Marine & Coastal Park	NATIONAL PARKS ACT SCHEDULE 4 PARK OR RESERVE
Woodside H28 Bushland Reserve	NATURAL FEATURES RESERVE - BUSHLAND RESERVE
Jack Smith Lake Wildlife Reserve (hunting)	NATURAL FEATURES RESERVE - WILDLIFE RESERVE (HUNTING)
Seaspray Reserves	COASTAL RESERVE
Jack Smith Lake Wildlife Reserve (hunting)	NATURAL FEATURES RESERVE - WILDLIFE RESERVE (HUNTING)
Jack Smith Lake Wildlife Reserve (hunting)	NATURAL FEATURES RESERVE - WILDLIFE RESERVE (HUNTING)
Seaspray Reserves	COASTAL RESERVE
Seaspray Reserves	COASTAL RESERVE
Giffard (Rifle Range) Flora Reserve	NATURE CONSERVATION RESERVE - FLORA RESERVE
Woodside H27 Bushland Reserve	NATURAL FEATURES RESERVE - BUSHLAND RESERVE
McLoughlins Beach - Seaspray Coastal Reserve	COASTAL RESERVE

Comments on the Gippsland REZ & Gippsland Shoreline

- We seek clarification on the rationale behind the broad width of the Gippsland Shoreline Renewable Energy Zone (REZ) and the offshore wind transmission study area.
- We note the coastal, bushland, wildlife, flora and streamline reserves as listed in the above table are all located within the REZ and study area and question if these areas can be avoided.
- Victoria's coastal reserves were subject to a Victorian Environmental Assessment Council (VEAC) assessment, called the [Assessment of Victoria's Coastal Reserves](#). We note the values of these listed reserves in the Inventory of Coastal Reserves and note some in the project area below.
 - The McLoughlins Beach - Seaspray Coastal Reserve has two conservation listed species, is part of the Corner Inlet Ramsar wetland, is a BirdLife

International Key Biodiversity Area (KBA) and is a landscape of cultural significance.

- Seaspray Coastal Reserve has endangered, vulnerable, depleted or rare EVC and is a landscape of cultural significance.
- Furthermore, adjacent to these areas are the Gippsland lakes Coastal Park and the Nooramunga Marine & Coastal Park

- The Planning Guidelines for Development of Wind Energy Facilities document states on page 9 to avoid Ramsar areas:

Wind energy facilities are not permitted in the following areas, in recognition of their landscape and environmental values:

- *National Parks and other land subject to the National Parks Act 1975*
- *Ramsar wetlands as defined under the Commonwealth Environment Protection and Biodiversity Conservation Act 1999*

- Given the above statement we question if some of the boundaries of the Gippsland Shoreline overlap with the Corner Inlet Ramsar Site, specifically the McLoughlins Beach - Seaspray Coastal Reserve (as identified by VEAC).
- Offshore Wind Energy Victoria have also produced the [Overview of values, uses and activities in Gippsland's marine environment](#) relevant to the offshore area and listed species of concern and as a starting point for more comprehensive marine spatial planning.
- We also note that the Marine and Coastal Act applies to the Gippsland Shoreline area, as its within 5km of the coastline. The Marine and Coastal Policy, Chapter 9: Marine and coastal industries, has some particularly relevant policies:

9.1 Strategically plan and manage industry use and development in the marine and coastal environment in a coordinated way to:

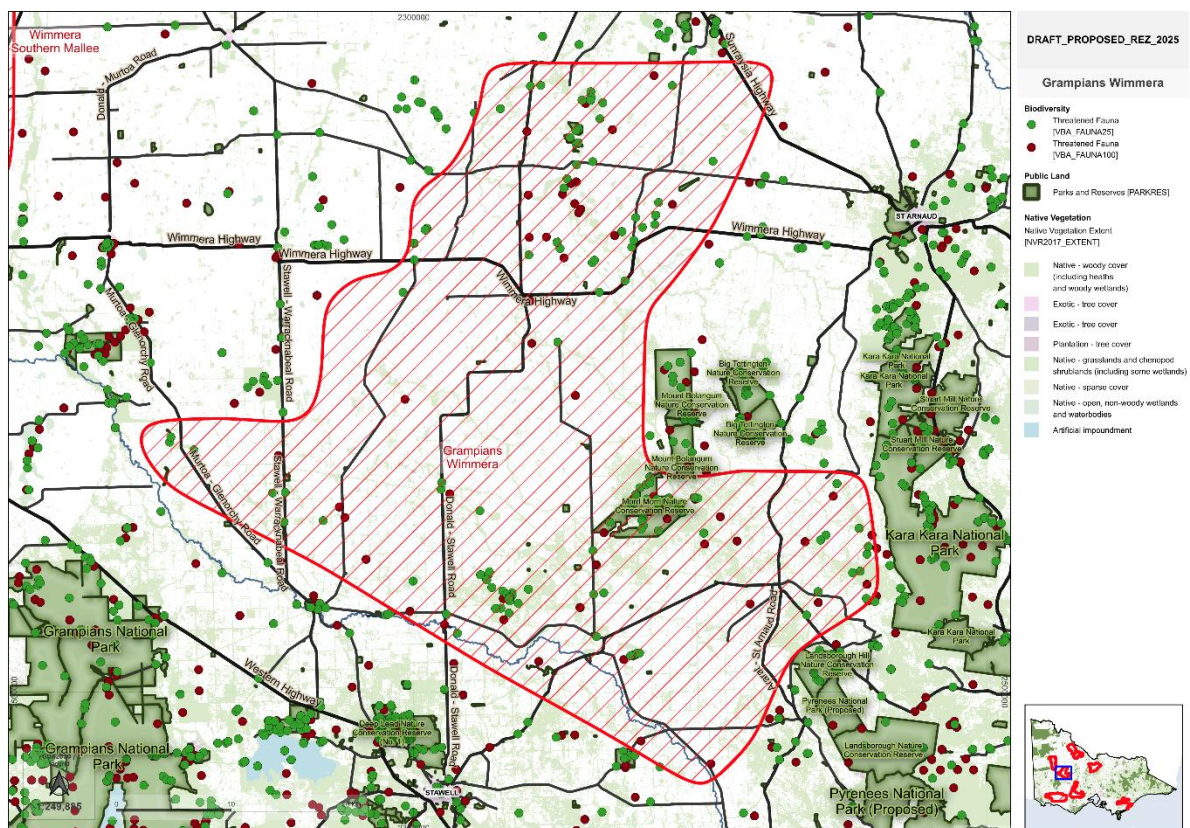
- a. provide for industry uses in appropriate locations (preferably on private land)*
- b. minimise impacts and risks to the marine and coastal environment*
- c. appropriately manage competing or conflicting uses*
- d. facilitate coexistence and co-location of compatible uses*
- e. take into account and minimise direct, cumulative and synergistic impacts*
- f. minimise exposure to coastal hazard risk and impacts of climate change.*

9.3 Use the Marine Spatial Planning Framework to guide planning, management and decision making across marine sectors in Victoria to enable equitable and ecologically sustainable marine uses and industries, and to coordinate and integrate managing risks, impacts and change in the marine and coastal environment.

Grampians Wimmera REZ

Recommendations

- Removal of Morrl Morrl Nature Conservation Reserve from REZ
- Include buffers around Brolga hot spot north of the Wimmera Highway
- Include buffers around the other smaller reserves within the REZ.



Map 11: Grampians Wimmera REZ overlapping with threatened species and parks and reserves.

Table 7: List of all reserves of the Grampians Wimmera

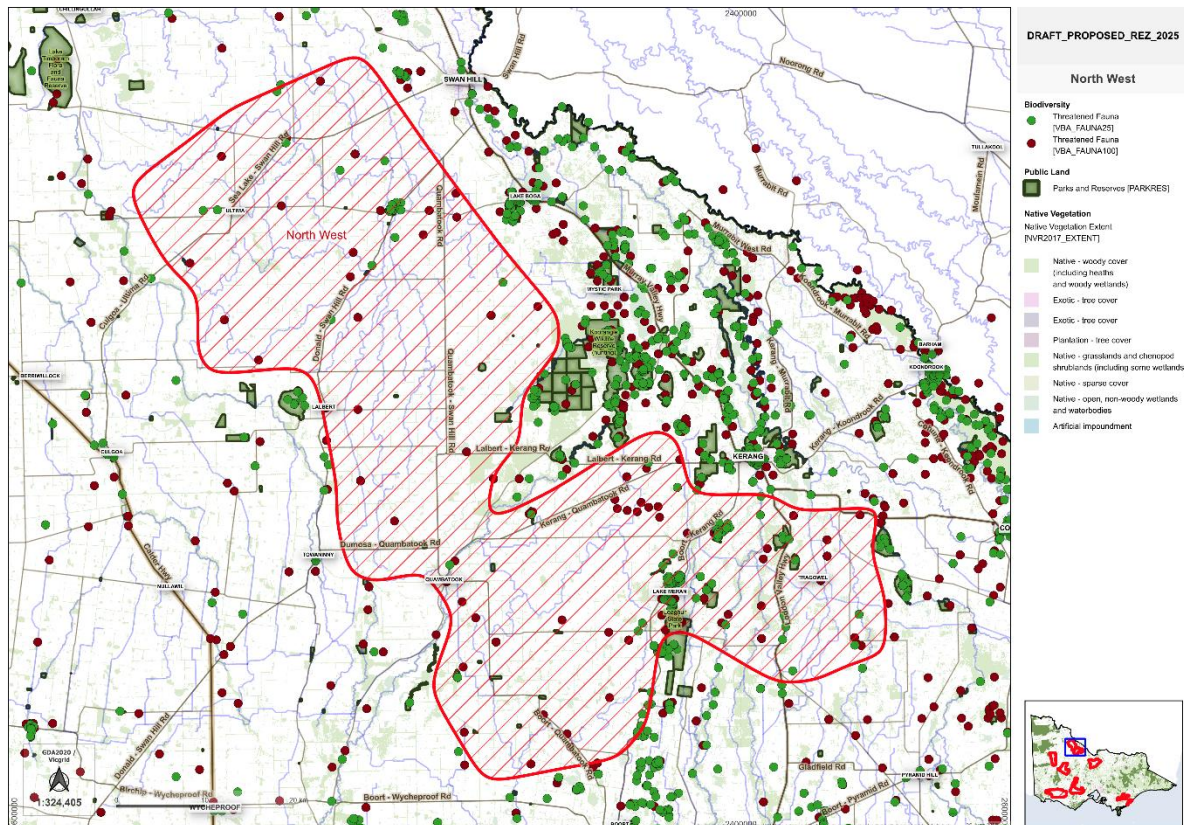
NAME	AREA_TYPE
Station Creek Streamside Reserve	NATURAL FEATURES RESERVE - STREAMSIDE RESERVE
Monaghans North Bushland Reserve	NATURAL FEATURES RESERVE - BUSHLAND RESERVE
Campbells Bridge Bushland Reserve	NATURAL FEATURES RESERVE - BUSHLAND RESERVE
Riachella I4 Bushland Reserve	NATURAL FEATURES RESERVE - BUSHLAND RESERVE
Morri Morri Nature Conservation Reserve	NATURE CONSERVATION RESERVE
Malakoff Bushland Reserve	NATURAL FEATURES RESERVE - BUSHLAND RESERVE
Navarre Bushland Reserve	NATURAL FEATURES RESERVE - BUSHLAND RESERVE
Ridds Bushland Reserve	NATURAL FEATURES RESERVE - BUSHLAND RESERVE
Greens Creek Streamside Reserve	NATURAL FEATURES RESERVE - STREAMSIDE RESERVE
Gre Gre Bushland Reserve	NATURAL FEATURES RESERVE - BUSHLAND RESERVE
Bolangum Flora Reserve	NATURE CONSERVATION RESERVE - FLORA RESERVE
McSparrons Bushland Reserve	NATURAL FEATURES RESERVE - BUSHLAND RESERVE
Banyena I134 Bushland Reserve	NATURAL FEATURES RESERVE - BUSHLAND RESERVE
Mount Bolangum Nature Conservation Reserve	NATURE CONSERVATION RESERVE
Mulligans Bushland Reserve	NATURAL FEATURES RESERVE - BUSHLAND RESERVE
Landsborough West School Historic Reserve	HISTORIC RESERVE
Vinelea Bushland Reserve	NATURAL FEATURES RESERVE - BUSHLAND RESERVE
Joel Joel Nature Conservation Reserve	NATURE CONSERVATION RESERVE
Willaring Streamside Reserve	NATURAL FEATURES RESERVE - STREAMSIDE RESERVE
Ridds Bushland Reserve	NATURAL FEATURES RESERVE - BUSHLAND RESERVE
Greens Creek Swamp Wildlife Reserve (hunting)	NATURAL FEATURES RESERVE - WILDLIFE RESERVE (HUNTING)
Greens Creek Bushland Reserve	NATURAL FEATURES RESERVE - BUSHLAND RESERVE
Creswick Swamp Wildlife Reserve (no hunting)	NATURE CONSERVATION RESERVE - WILDLIFE RESERVE (NO HUNTING)
Vinelea Bushland Reserve	NATURAL FEATURES RESERVE - BUSHLAND RESERVE
Walkers Lake Parklands (COM)	OTHER
Marnoo Bushland Reserve	NATURAL FEATURES RESERVE - BUSHLAND RESERVE
Avon Plains (Hancocks and Walkers Lake) Wildlife Reserve (hunting)	NATURAL FEATURES RESERVE - WILDLIFE RESERVE (SGR CLASSIFICATION PENDING RESERVATION)
Vinelea Bushland Reserve	NATURAL FEATURES RESERVE - BUSHLAND RESERVE
Ridds Bushland Reserve	NATURAL FEATURES RESERVE - BUSHLAND RESERVE
Wallaloo Bushland Reserve	NATURAL FEATURES RESERVE - BUSHLAND RESERVE
Pickfords Bushland Reserve	NATURAL FEATURES RESERVE - BUSHLAND RESERVE

Paynes Pool Bushland Reserve	NATURAL FEATURES RESERVE - BUSHLAND RESERVE
Avon Plains Swamp (Hollands Lake) Wildlife Reserve (no hunting)	NATURE CONSERVATION RESERVE - WILDLIFE RESERVE (NO HUNTING)
Campbells Bridge Bushland Reserve	NATURAL FEATURES RESERVE - BUSHLAND RESERVE
Ridds Bushland Reserve	NATURAL FEATURES RESERVE - BUSHLAND RESERVE
Monaghans South Bushland Reserve	NATURAL FEATURES RESERVE - BUSHLAND RESERVE
Heifer Station Creek Natural Features Reserve	NATURAL FEATURES RESERVE
Ridds Bushland Reserve	NATURAL FEATURES RESERVE - BUSHLAND RESERVE
Campbells Bridge Bushland Reserve	NATURAL FEATURES RESERVE - BUSHLAND RESERVE
Wallaloo Bushland Reserve	NATURAL FEATURES RESERVE - BUSHLAND RESERVE
Vinelea Bushland Reserve	NATURAL FEATURES RESERVE - BUSHLAND RESERVE
Faux Bridge Streamside Reserve	NATURAL FEATURES RESERVE - STREAMSIDE RESERVE
Navarre Nature Conservation Reserve	NATURE CONSERVATION RESERVE
Blind Creek Streamside Reserve	NATURAL FEATURES RESERVE - STREAMSIDE RESERVE
Campbells Bridge Bushland Reserve	NATURAL FEATURES RESERVE - BUSHLAND RESERVE
Winjallock Bushland Reserve	NATURAL FEATURES RESERVE - BUSHLAND RESERVE
Campbells Bridge Bushland Reserve	NATURAL FEATURES RESERVE - BUSHLAND RESERVE
Wirchilleba Bushland Reserve	NATURAL FEATURES RESERVE - BUSHLAND RESERVE

North West REZ

Recommendations

- Include a buffer around the reserves.
- Removal of the Leaghur State Park from REZ



Map 12: North West REZ overlapping with threatened species and parks and reserves.

Table 8: List of all reserves of the North West

NAME	AREA_TYPE
Leaghur Bushland Reserve	NATURAL FEATURES RESERVE - BUSHLAND RESERVE
Johnson Swamp Wildlife Reserve (hunting)	NATURAL FEATURES RESERVE - WILDLIFE RESERVE (HUNTING)
Gredgwin Bushland Reserve	NATURAL FEATURES RESERVE - BUSHLAND RESERVE
Griffith Lagoon Nature Conservation Reserve	NATURE CONSERVATION RESERVE
Leaghur State Park	STATE PARK - SCHEDULE 2B, NATIONAL PARKS ACT
Korrak Korrak Bushland Reserve	NATURAL FEATURES RESERVE - BUSHLAND RESERVE
Little Lake	NATURAL FEATURES RESERVE - WILDLIFE RESERVE (SGR CLASSIFICATION PENDING RESERVATION)
White Gate Bushland Reserve	NATURAL FEATURES RESERVE - BUSHLAND RESERVE

Nowie Bushland Reserve	NATURAL FEATURES RESERVE - BUSHLAND RESERVE
Marmal I210 Bushland Reserve	NATURAL FEATURES RESERVE - BUSHLAND RESERVE
Lake Gilmour Wildlife Reserve (hunting)	NATURAL FEATURES RESERVE - WILDLIFE RESERVE (HUNTING)
Tragowel Swamp Nature Conservation Reserve	NATURE CONSERVATION RESERVE
Great Spectacle Lake Complex Wildlife Reserve (hunting)	NATURAL FEATURES RESERVE - WILDLIFE RESERVE (SGR CLASSIFICATION PENDING RESERVATION)
Marmal Flora Reserve	NATURE CONSERVATION RESERVE - FLORA RESERVE
Meering West Bushland Reserve	NATURAL FEATURES RESERVE - BUSHLAND RESERVE
Meering West Bushland Reserve	NATURAL FEATURES RESERVE - BUSHLAND RESERVE
Quambatook I208 Bushland Reserve	NATURAL FEATURES RESERVE - BUSHLAND RESERVE
Talgitcha Bushland Reserve	NATURAL FEATURES RESERVE - BUSHLAND RESERVE
Lake Meran Wildlife Reserve (hunting)	NATURAL FEATURES RESERVE - WILDLIFE RESERVE (HUNTING)
Beauchamp Bushland Reserve	NATURAL FEATURES RESERVE - BUSHLAND RESERVE
Korrak Korrak Nature Conservation Reserve	NATURE CONSERVATION RESERVE
Leaghur State Park	STATE PARK - SCHEDULE 2B, NATIONAL PARKS ACT
Gredgwin School Bushland Reserve	NATURAL FEATURES RESERVE - BUSHLAND RESERVE
Griffith Lagoon Nature Conservation Reserve	NATURE CONSERVATION RESERVE
Quambatook Bushland Reserve	NATURAL FEATURES RESERVE - BUSHLAND RESERVE
Cannie Nature Conservation Reserve	NATURE CONSERVATION RESERVE
Company Dam Bushland Reserve	NATURAL FEATURES RESERVE - BUSHLAND RESERVE
Lake Murphy Wildlife Reserve (hunting)	NATURAL FEATURES RESERVE - WILDLIFE RESERVE (SGR CLASSIFICATION PENDING RESERVATION)
Goschen Bushland Reserve	NATURAL FEATURES RESERVE - BUSHLAND RESERVE
Quambatook I204 Bushland Reserve	NATURAL FEATURES RESERVE - BUSHLAND RESERVE
Great Spectacle Lake Complex Wildlife Reserve (hunting)	NATURAL FEATURES RESERVE - WILDLIFE RESERVE (SGR CLASSIFICATION PENDING RESERVATION)
14 Mile Bushland Reserve	NATURAL FEATURES RESERVE - BUSHLAND RESERVE
Magpie Tank Bushland Reserve	NATURAL FEATURES RESERVE - BUSHLAND RESERVE
Great Spectacle Lake Complex Wildlife Reserve (hunting)	NATURAL FEATURES RESERVE - WILDLIFE RESERVE (SGR CLASSIFICATION PENDING RESERVATION)
Leaghur Bushland Reserve	NATURAL FEATURES RESERVE - BUSHLAND RESERVE
Griffith Lagoon Nature Conservation Reserve	NATURE CONSERVATION RESERVE
Goschen Bushland Reserve	NATURAL FEATURES RESERVE - BUSHLAND RESERVE
Bael Bael Grassland N.C.R. (addition)	
Nature Conservation Reserve	NATURE CONSERVATION RESERVE
Two Mile Swamp Wildlife Reserve (hunting)	NATURAL FEATURES RESERVE - WILDLIFE RESERVE (HUNTING)

Kangaroo Dam Bushland Reserve	NATURAL FEATURES RESERVE - BUSHLAND RESERVE
Beauchamp Bushland Reserve	NATURAL FEATURES RESERVE - BUSHLAND RESERVE
Clear Tank Bushland Reserve	NATURAL FEATURES RESERVE - BUSHLAND RESERVE
Great Spectacle Lake Complex Wildlife Reserve (hunting)	NATURAL FEATURES RESERVE - WILDLIFE RESERVE (SGR CLASSIFICATION PENDING RESERVATION)

Wimmera Southern Mallee REZ

Recommendations

- Include a 1km buffer around the Barret Nature Conservation Reserve
- Include buffers around other reserves.

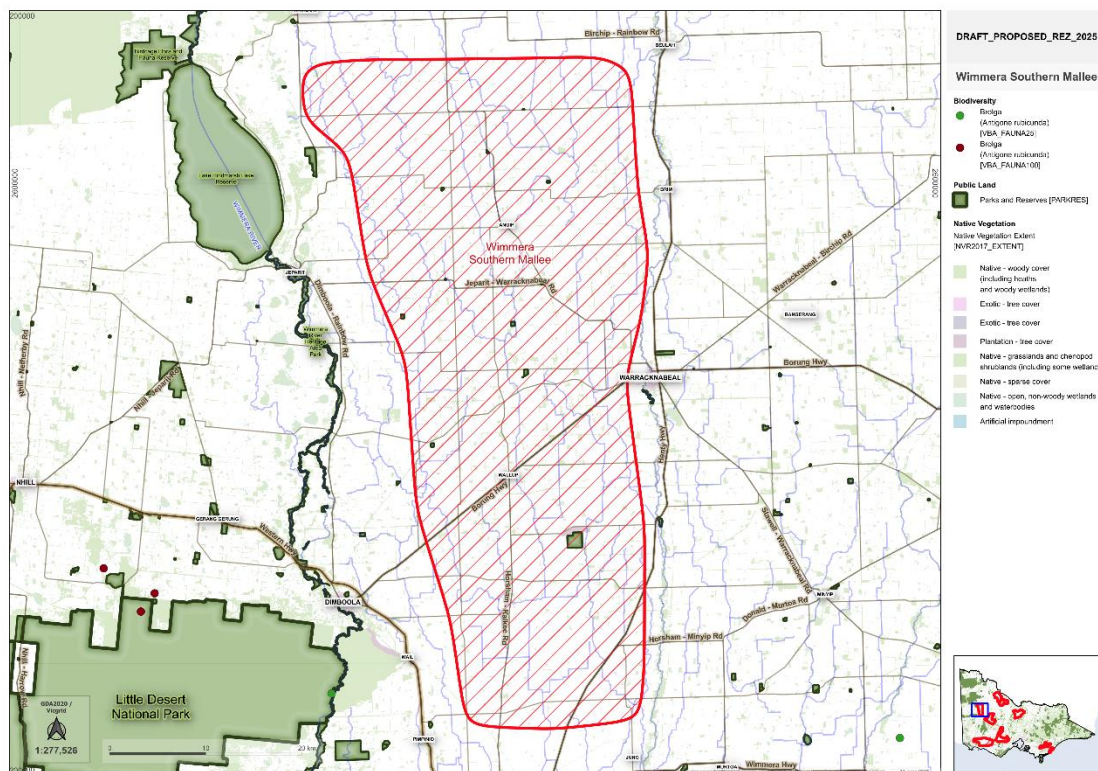


Table 8: List of all reserves of the Wimmera Southern Mallee

NAME	AREA_TYPE
Cat Swamp Bushland Reserve	NATURAL FEATURES RESERVE - BUSHLAND RESERVE
Barrett Flora and Fauna Reserve	NATURE CONSERVATION RESERVE - FLORA AND FAUNA RESERVE
Willenabrina I86 Bushland Reserve	NATURAL FEATURES RESERVE - BUSHLAND RESERVE
Joop I84 Bushland Reserve	NATURAL FEATURES RESERVE - BUSHLAND RESERVE
Beulah Bushland Reserve	NATURAL FEATURES RESERVE - BUSHLAND RESERVE
Seven Mile Dam Wildlife Reserve (hunting)	NATURAL FEATURES RESERVE - WILDLIFE RESERVE (HUNTING)
Willenabrina I85 Bushland Reserve	NATURAL FEATURES RESERVE - BUSHLAND RESERVE
Morep Dam Bushland Reserve	NATURAL FEATURES RESERVE - BUSHLAND RESERVE
Pepper Plains Bushland Reserve	NATURAL FEATURES RESERVE - BUSHLAND RESERVE
Crymelon Bushland Reserve	NATURAL FEATURES RESERVE - BUSHLAND RESERVE
Crow Swamp (Phillips Dam) Wildlife Reserve (hunting)	NATURAL FEATURES RESERVE - WILDLIFE RESERVE (HUNTING)