

Wild Families Activity Sheet



Loads of lovely leaves

Get to know the different leaves around you and become a budding botanist (scientists who study plants). These leaves could be near home, in the bush, in the school yard or park.

Collect some leaves and use the questions to get to know your leaf, just like a botanist would. Grab some paper and pencils to record your discoveries.



1 Draw your leaf:

- Trace around the edge of your leaf.
- Try a free hand drawing.
- Do a leaf rubbing using crayons and admire the textures and shape.
- Paint your leaf.



2 How many colours and shades are on your leaf? Is it the same colour on both sides?



Happy Wanderer



3 What patterns can you see in the veins?



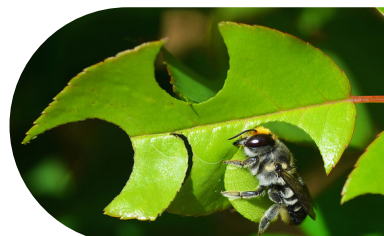
4 How long is your leaf? Longer than your finger? Longer than your arm?



5 What does your leaf feel like? Rough or smooth?



6 Is there anything living on your leaf?



7 Can you see any evidence that an animal has visited your leaf? What type of animal could it be?

Cool things about leaves

- A leaf is an 'organ' of a plant. Its job is to create food ☺ to give the plant energy to grow and make more plants.
- In wet forests and rainforests, leaves provide 'shade umbrellas' ☂ for the forest below. This helps keep the forest moist.
- Even leaves on the ground are important in the bush. They create 'leaf litter'. Leaf litter protects the soil from the harsh sun ☀ and gives shelter and food to tiny animals 🐛.
- Leaves on desert trees are usually very tough and leathery to keep them from drying out. They grow in very dry places and need to hold on to as much water as they can.
- Leaves are used by wildlife for all sorts of things. They can be used for food, building nests 🏠, a place to lay eggs 🥚, warmth and shelter.



"Blanket Leaf"
Bedfordia arborescens



8 What type of plant did your leaf come from? Was it a tree, a grass, a bush? Something else?



9 How many other leaves do you think are on your plant? Count them, or guess.

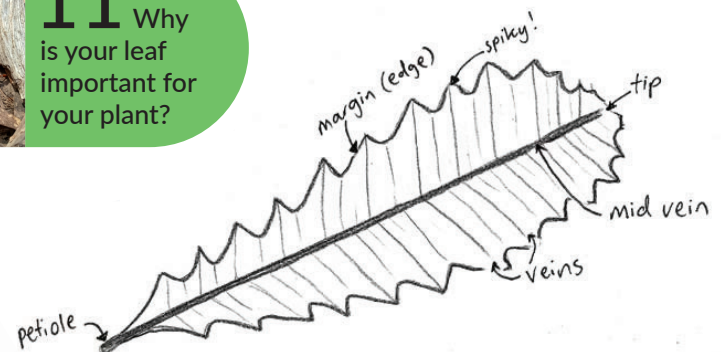


10 Is there a pattern to the way the leaves grow? Do they grow all the way around a stem, or on opposite sides of the stem?

A rough, bumpy leaf



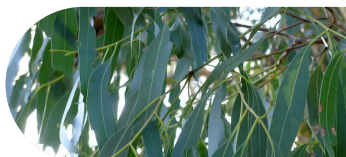
11 Why is your leaf important for your plant?



"Saw-sedge Banksia"
Banksia serrata



12 Who or what else might your leaf be important for?



13 Can you work out what plant your leaf belongs to? Hint: Take a photo and upload it to the iNaturalist App to help narrow it down!

Download all our Wild Families activity sheets
vnpa.org.au/wild-families



VICTORIAN
NATIONAL PARKS
ASSOCIATION



@vicnationalparks