

# Wild Families



## Glorious grasslands

VNPA ACTIVITY SHEET

### Go wild in our volcanic grassy plains

THERE'S SO MUCH TO DISCOVER IN THE SURPRISING WORLD BELOW YOUR KNEES!



**1** Grasslands are made up of beautiful grasses like Kangaroo Grass, wallaby grasses, spear grasses and wildflowers such as Button Wrinklewort, Spiny Rice-flower, Billy Buttons, Drumsticks, Lemon Beauty Heads and Blue Devils.



**2** You can find heaps of different creatures in grasslands, like reptiles, birds, insects and mammals.



**4** Grasslands are home to many special, threatened plants and animals, like Golden Moth Orchids, Yam Daisies, Slender Darling Peas, Grassland Earless Dragons, Golden Sun Moths, Growling Grass Frogs and Striped Legless Lizards.



**3** If you stand in a grassland, you'll probably be the tallest thing in it. Most plants and animals in grasslands are less than one metre tall. Grasslands have no, or very few, trees.



**5** Some of the best patches of grasslands can be found on roadsides, beside railway lines and in old cemeteries.

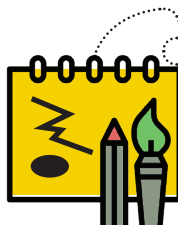
IMAGES: JO LYNCH, EMILY SCICLUNA, JAMES NILAND, ADRIAN MARSHALL

### What to look for on a grassland wander

Grasslands are interesting places to visit, especially in spring! You can find grasslands to the west of Melbourne, in places like Isabella Williams Memorial Reserve in Deer Park or Evans Street Grassland in Sunbury. Next time you go for a walk in a grassland, here are some things your family can try:



Search for every colour of the rainbow in the grassland. Take a photo of each colour and put them together to make a rainbow picture.



Have a look for cracks and holes in the soil and draw a picture of the animals you think might live in them.



Bend down and look very closely – how many different plants can you see?



Count how many insects you find along your walk – do you see any butterflies, native bees or wasps?



Count how many different types of flowers you can find.

# Colour your grassland world

1. Kangaroo Grass
2. Plains Yam Daisy
3. Matted Flax-lily
4. Blue-banded Bee
5. Fat-tailed Dunnart
6. Golden Sun Moth
7. Short Wallaby Grass
8. Rough Spear Grass
9. Blue Pincushion
10. Purple Diuris
11. Button Quail
12. Swamp Everlasting
13. Creeping Bossiaea
14. Eltham Copper Butterfly
15. Grassland Earless Dragon
16. Cryptogamic crust
17. Yam Daisy bulbs
18. Striped Legless Lizard
19. Golden Sun Moth larvae (feeding on Wallaby Grass)
20. Wolf Spider
21. Fat-tailed Dunnart (hiding in a burrow)

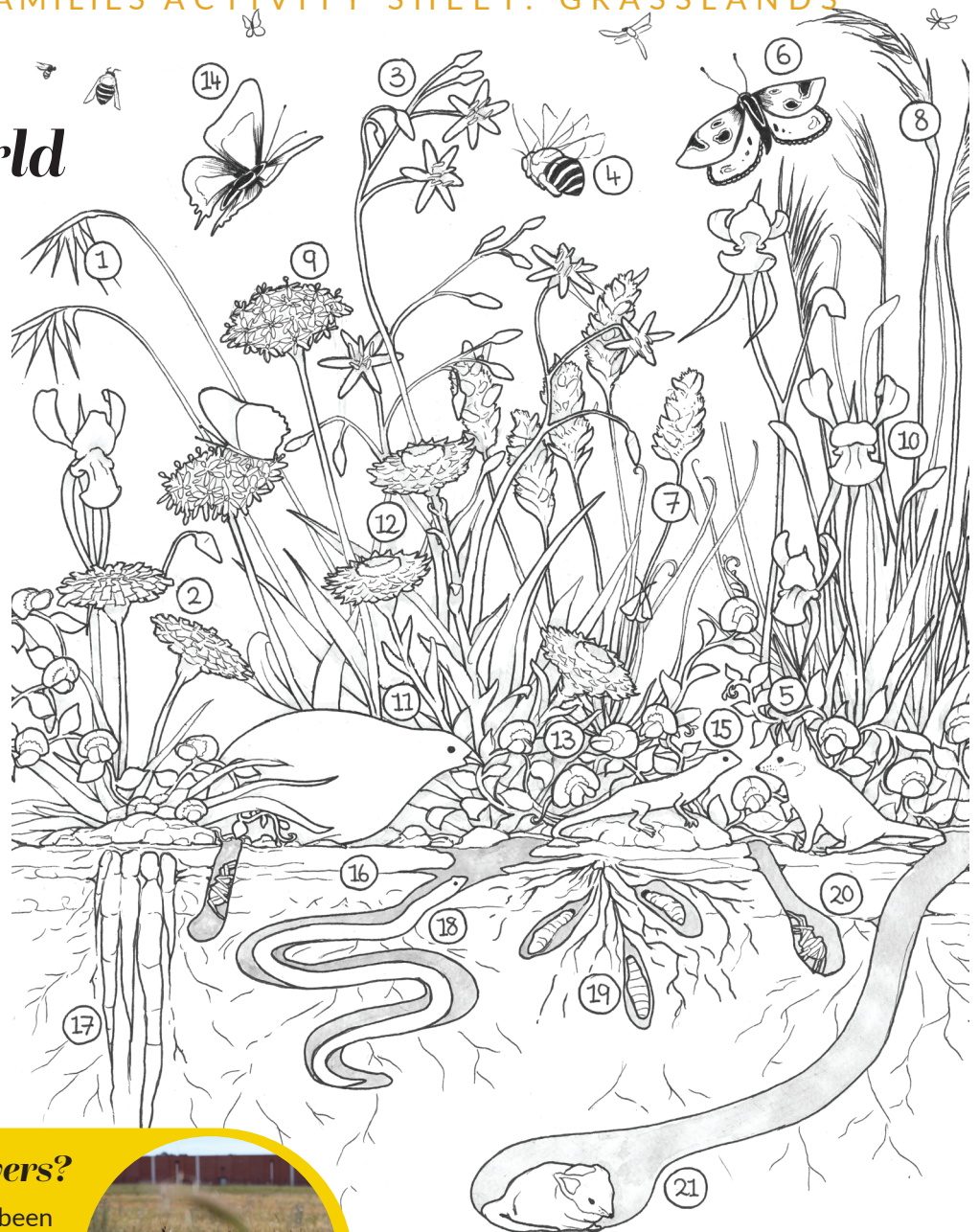


ILLUSTRATION: GEORGIA ANGUS

## Where are our wildflowers?

Most of Victoria's grasslands have been destroyed for grazing, cropping and housing. A tiny 1% have survived.

One of the biggest threats to grasslands today is new houses being built over them.



## How you can help our grassy meadows



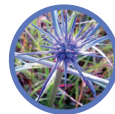
Plant local grassland plants in your garden to create a home for animals that rely on them for food and shelter. Find the right plants for your area at your local nursery.

Volunteer with a nature group to plant even more grassland plants.



Learn all about grasslands and tell your friends! The more people that know how amazing grasslands are, the more people will look after them.

## A grassy poem



Billy-buttons are **yellow**

Blue-devils are **blue**

If you look closely at grasslands  
You'll find their colours, too.



Bindweeds are **pink**

Saltbush berries are **red**

Grasslands bloom in spring  
Including fluffy Feather-heads.



Chocolate-lillies are **purple**

Greenhoods are **green**

When you explore a grassland  
You'll see what we mean!



Download all Wild Families activity sheets  
[vnpa.org.au/wild-families](http://vnpa.org.au/wild-families)



VICTORIAN  
NATIONAL PARKS  
ASSOCIATION  
Be part of nature

Facebook: [vicnationalparks](https://www.facebook.com/vicnationalparks)

Twitter: [@vicnationalparks](https://twitter.com/vicnationalparks)



IMAGES: MEGHAN LINDSAY, IT'S A WILDLIFE, WINKY WOMBAT, FLYNN'S BIOME, ALAN KING, THYLACOLEO, RETO ZOLLINGER, JESSIE BORRELLE.