

Wild Families



Tree hollows

VNPA ACTIVITY SHEET

Say hello to some tree hollow facts

WHAT ARE TREE HOLLOWES, WHY ARE THEY IMPORTANT, AND WHO NEEDS THEM?



1 A tree hollow is a hole or crack in a trunk or branch of a tree. They can be in living or dead trees.



2 Lots of different animals need tree hollows, including different types of birds, mammals, lizards and frogs 🐸. Over 340 types of Australian animals use tree hollows as their home 🏠!



4 Eucalyptus trees are the main type of trees that form hollows in Australia 🇦🇺



3 Some animals use hollows all year round to sleep in 🛏️, others only use hollows for part of the year for nesting 🐷.



5 Hollows in trees are created by things like bacteria, fire, fungi 🍄 and termites 🐜. Hollows are also made when wind 🌪️ knocks branches off trees.



6 Different sized animals need different sized and shaped hollows to live in ■ ◆ ▲



7 Hollows for animals like birds and mammals generally don't begin to form in trees until the tree is over 100 years old. They can take over 200 years to form hollows big enough for larger animals to use.

Knock knock
Who's there?
Who!



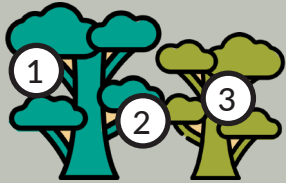
Who who?
Are you an owl?



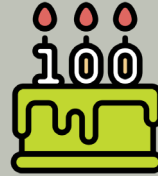
VICTORIAN
NATIONAL PARKS
ASSOCIATION
Be part of nature

Hunting for tree hollows

On your next walk in a forest, take some time to notice the tree hollows and who might live in them. Tree hollows look like a hole or crack in the trunk or branch of a tree. They can be small or hidden, so you'll need to look closely! Always watch tree hollows quietly and from a distance. This will keep nesting animals feeling safe and keep you safe too, because you never know what might be in there. Here are some things your family can try along the way:



Count how many trees with hollows you can find.



Guess how old the trees with hollows are.

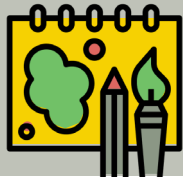


Look for evidence near each hollow that could show an animal is using it.

Can you see scratch marks, rubbed bark or animal poo?



Choose one hollow and watch it quietly for a while during the day or when the sun goes down. Does anything go in or come out?



Choose one hollow and draw a picture of it and the animals you think might use it.



Logging in the Wombat Forest. WOMBAT FORESTCARE

Threats to tree hollows

Many trees with hollows have been destroyed by land-clearing and logging in Victoria. Introduced animals like European Bees, Common Mynas and Black Rats take over tree hollows, leaving less available for native animals.

What you can do to help animals that need tree hollows

If you have a large backyard, you can plant a local type of Eucalyptus tree. One day it will be big enough to form hollows for animals to live in!

Volunteer with a local group to plant trees. These trees will form hollows one day and create homes for lots of animals.



Tree planting volunteers. GREENING AUSTRALIA

Build or buy a nest box for your backyard. Animals can live there while they are waiting for trees nearby to grow old enough to form hollows. Don't forget, different animals need different sized nest boxes. You can find nest box designs online to make sure you build a box with the right dimensions.



Squirrel Gliders in a nest box. RAY THOMAS

Quiz: Who sleeps here?

Which 7 of these 10 animals use tree hollows to nest or sleep in?



Gang-gang Cockatoo



Koala



Crimson Rosella



Greater Glider



Superb Lyrebird



Powerful Owl



Leadbeater's Possum



Lace Monitor



Australian Magpie



Laughing Kookaburra

Download all Wild Families activity sheets
vnpa.org.au/wild-families



vicnationalparks
 @vicnationalparks

