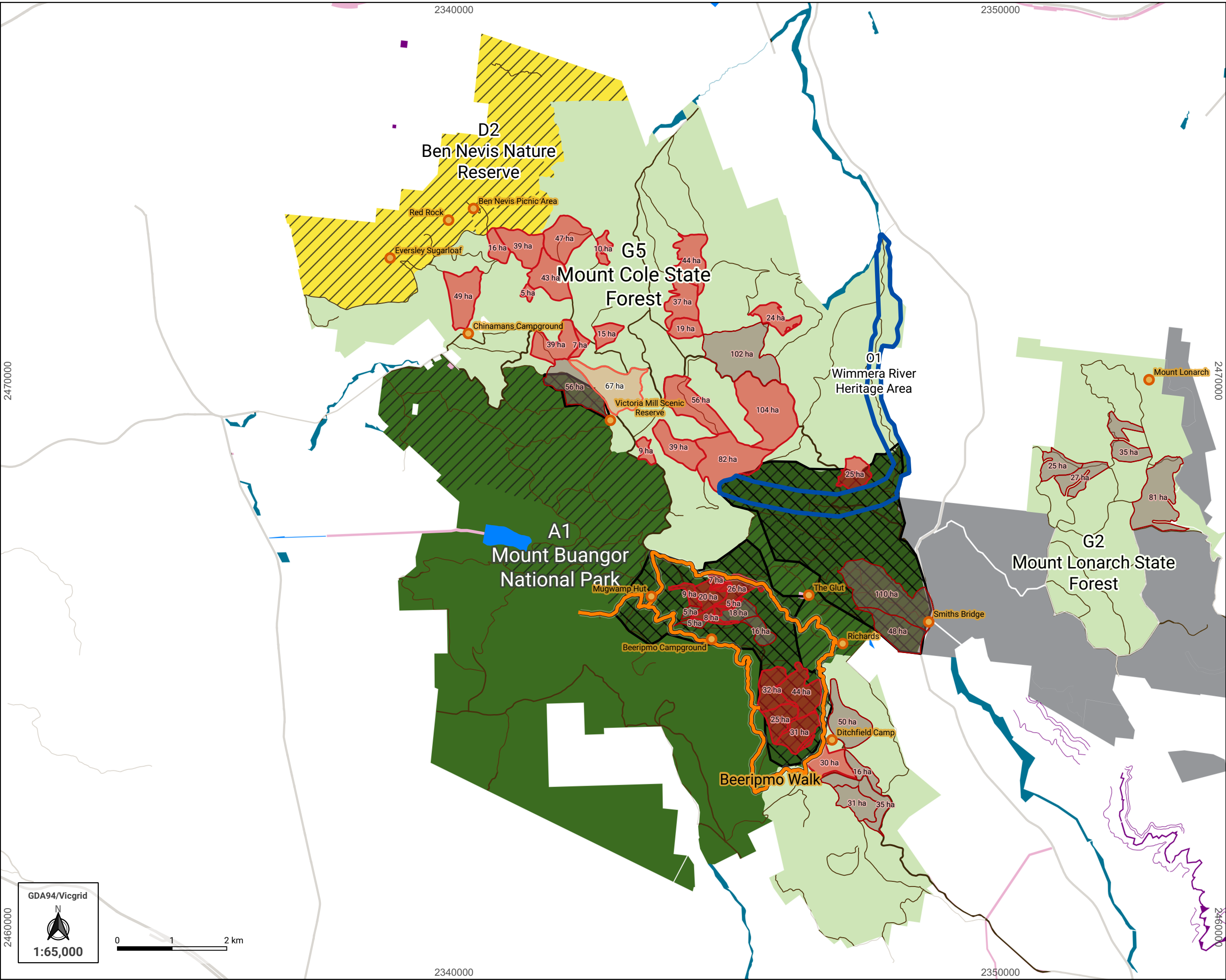


MOUNT COLE FOREST



**VEAC Recommendations incorporating Victorian Government response 2021**

Public land use category (VEAC Recommendations)

- National park
- Nature reserve
- State forest
- Water frontage, beds and banks reserve
- Water production reserve
- Utilities and government services reserve
- Land leased or licensed for plantation purposes
- Uncategorised public land
- Wimmera River Heritage Area
- Recommended change in public land use

**Recreation**

- Beeripmo Walk
- Camp and recreation locations

**Logging areas**

VicForests logging coupes (Approved\_TUP\_Boundaries\_Dec\_2019) excluding coupes not permitted in proposed park areas

- Even-aged stand management
- Multi-aged stand management
- Speciality timber selection
- VicForests logging access

**Roads**

