

The Inaugural Melbourne Sea Slug Census

21-22 April 2018

Thanks to everyone who participated in the inaugural Melbourne Sea Slug Census. We had a great turnout with more than 150 people searching for slugs on all sides of Port Philip Bay and also in Westernport. Thanks to the Victorian National Parks Association's ReefWatch program, we received images from 40 teams which is the highest we've had in any census to date. The list of sites examined included: Portsea, Castle Rock, Blairgowrie, Boar Fish Reef, Beaumaris, Flinders Pier, Jawbone Marine Sanctuary, Kerford Road Pier - Albert Park, Hampton Beach, Brighton Beach, Middle Brighton Beach, Green Point Brighton, Mushroom Reef, Point Lonsdale, Point Ormond, Ricketts Point, Rye Pier, San Remo, St Leonards, Western Port Bay and Williamstown. And now to the results you've all been waiting for ...

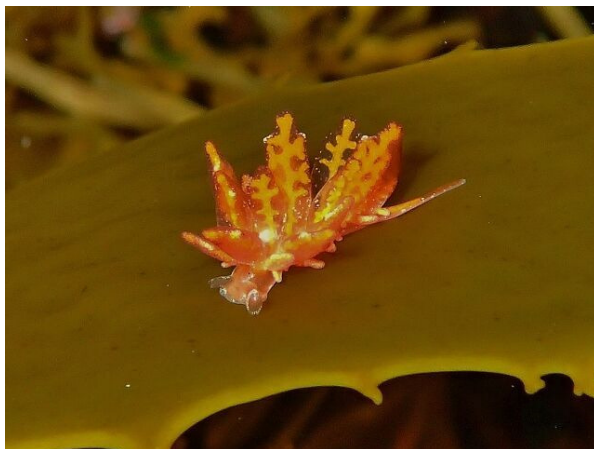
BEST NUDI SPOTTERS (with the highest count on the day) – congratulations to **Rebecca Lloyd** who submitted photos of the most species of sea slug (17). Rebecca was closely followed by **Nick Shaw** (14 species – with some very interesting ones amongst these).

BEST PHOTO (Judged by Bob Burn) – Nick Shaw - *Hermaea* sp. “This is a beautiful scientific photo with a uniform background that doesn't distract from the subject, clearly showing the digestive glands in the cerata.”

MOST INTERESTING SPECIES (Judged by Bob Burn) – Nick Shaw – *Eubbranchus* sp. “There are several *Eubbranchus* sp. found in Victoria, but I do not think I have seen this one before. This is possibly a new species”

Together, we found a total of **53 species** of sea slug which is a great outcome for the inaugural event. Well done everyone!

To help hone those identification skills, and to alert you all to some of the species you may have overlooked in the past, we have selected an image of each species found and provided the number of teams that found it (out of a total of 40). The initials of the photographer that took the image are shown in brackets (key at the bottom of this page)



Nick Shaw's winning image of *Hermaea* sp.

Photographers: CB – Carol Bathie; CH - Chris Hurwood; DA – Deb Aston; EC – Emily Clifford; EW - Emma Westlake; HH - Heidi Harron; IS - Ian Scholey; JB - Jack Breedon; KB - Karen Boar; KF - Ken Flanagan; LS - Louise Stuteley; NS – Nick Shaw; PTH – PT Hirschfield; RL - Rebecca Lloyd; SS – Steve Smith; SW - Sandy Webb; TD - Tom Davis.



Ceratosoma brevicaudatum (TD)
(30 sightings)



Verconia haliclona (PTH)
(9 sightings)



Goniobranchus tinctorius (EW)
(6 sightings)



Doriopsilla carneola (DA)
(6 sightings)



Tambja verconis (TD)
(6 sightings)



Phyllodesmium serratum (NS)
(5 sightings)



Ceratosoma amoenum (EW)
(4 sightings)



Verconia verconis (TD)
(4 sightings)



Trapania brunnea (NS)
(4 sightings)



Rostanga sp. (CH)
(4 sightings)



Aphelodoris berghi (PTH)
(4 sightings)



Aplysia parvula (DA)
(3 sightings)



Elysia australis (EC)
(3 sightings)



Flabellina sp. (RL)
(3 sightings)



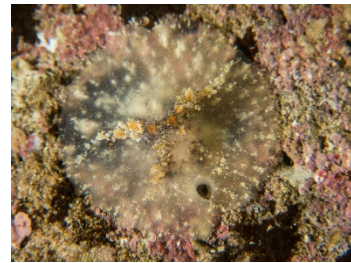
Phillinopsis lineolata (HH)
(3 sightings)



Tambja dracomus (PTH)
(3 sightings)



Velutininid sp. (Orange spot) (PTH)
(3 sightings)



Velutininid sp. (Y-pattern) (PTH)
(3 sightings)



Pleurobranch sp. (IS)
(2 sightings)



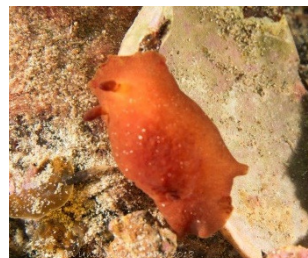
Berthellina citrina (CB)
(2 sightings)



Caldukia affinis (NS)
(2 sightings)



Chromodoris alternata (CH)
(2 sightings)



Doriopsilla peculiaris (DA)
(2 sightings)



Elysia ? tomentosa (CH)
(2 sightings)



Ercolania boodleae (NS)
(2 sightings)



Jorunna hartleyi (CH)
(2 sightings)



Mexichromis macropus (CB)
(2 sightings)



Paradoris dubia (IS)
(2 sightings)



Velutininid sp. (orange/cream) (PTH)
(2 sightings)



Aphelodoris sp. (RB1) (LS)
(1 sighting)



Austraeolis ornata (SS)
(1 sighting)



Baeolidia australis (KB)
(1 sighting)



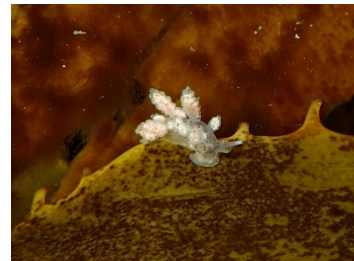
Crimora multidigitalis (PTH)
(1 sighting)



Dendrodoris arborescens (RL)
(1 sighting)



Doris chrysoderma (KB)
(1 sighting)



Doto ostenta (NS)
(1 sighting)



Eubranchus sp. (NS)
(1 sighting)



Hermaea sp. (NS)
(1 sighting)



Hoplodoris nodulosa (SS)
(1 sighting)



Madrella sp. (JB)
(1 sighting)



Marionopsis platyctenea (DA)
(1 sighting)



Onchidium sp. (DA)
(1 sighting)



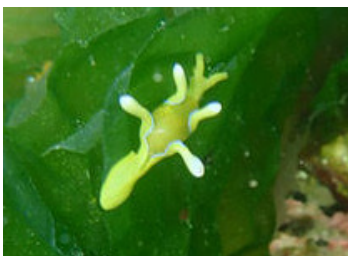
Oxynoe viridis (RL)
(1 sighting)



Phyllodesmium macphersonae (NS)
(1 sighting)



Placida dendritica (RL)
(1 sighting)



Roburnella wilsoni (KF)
(1 sighting)



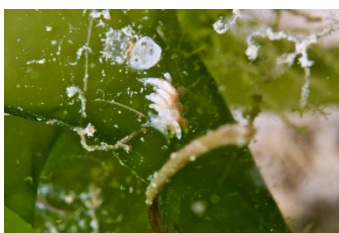
Rostanga ? bifurcata (RL)
(1 sighting)



Stiliger smaragdinus (SW)
(1 sighting)



Thorunna perplexa (NS)
(1 sighting)



Trinchisia sp. 1 (RL)
(1 sighting)



Trinchisia sp. 2 (NS)
(1 sighting)



Tylodina corticalis (NS)
(1 sighting)



Verconia aureopunctata or *Goniobranchus epicurius* (NS)
(1 sighting)

Identification of juveniles of these two taxa is difficult without additional morphological details.

Finally, a very big THANKYOU to:

All of you for your enthusiastic participation and to the amazing organizing at the Victorian National Parks Association's ReefWatch program led by Kade Mills.

Our sponsors – Academy of Scuba, Aquability, Aquatic Adventures, Australian Diving Instruction, Dive and Dive, Diveline, Dive2U, Port Phillip EcoCentre, Ocean Divers, Redboats, Scuba Culture, See All Dolphin Swims and Melbourne Sealife Aquarium.

Bob Burn for assistance with identification and for choosing the best image and most interesting find.

Happy slug hunting and hope to see you all again for the next Melbourne Sea Slug Census.

Remember, there are also events in other parts of the country – notification of these will be made through the network of Facebook and web sites. Sea Slug Census <https://www.facebook.com/groups/seaslugcensus/>

Steve Smith and Matt Nimbs

National Marine Science Centre
Southern Cross University