

CREATION OF A MURRAY RIVER PARK – LOCKED IN LIMBO

The protection of key wetland areas between river red gum national parks in a new Murray River Park remains unfinished business for the Victorian Labor Government.

When former Victorian Labor premier John Brumby made history by officially declaring four new River Red Gum national parks on 29 June 2010 included was a commitment to protect sensitive wetland areas between those parks in the form of a new Murray River Park.

Once created the Murray River Park would form key ecological links between forests dotting the Murray River and major river red gum national parks. The Murray River Park was a key part of the new red gum national parks legislation but never formally gazetted before the change of government in 2010, when a new Coalition Government took office.

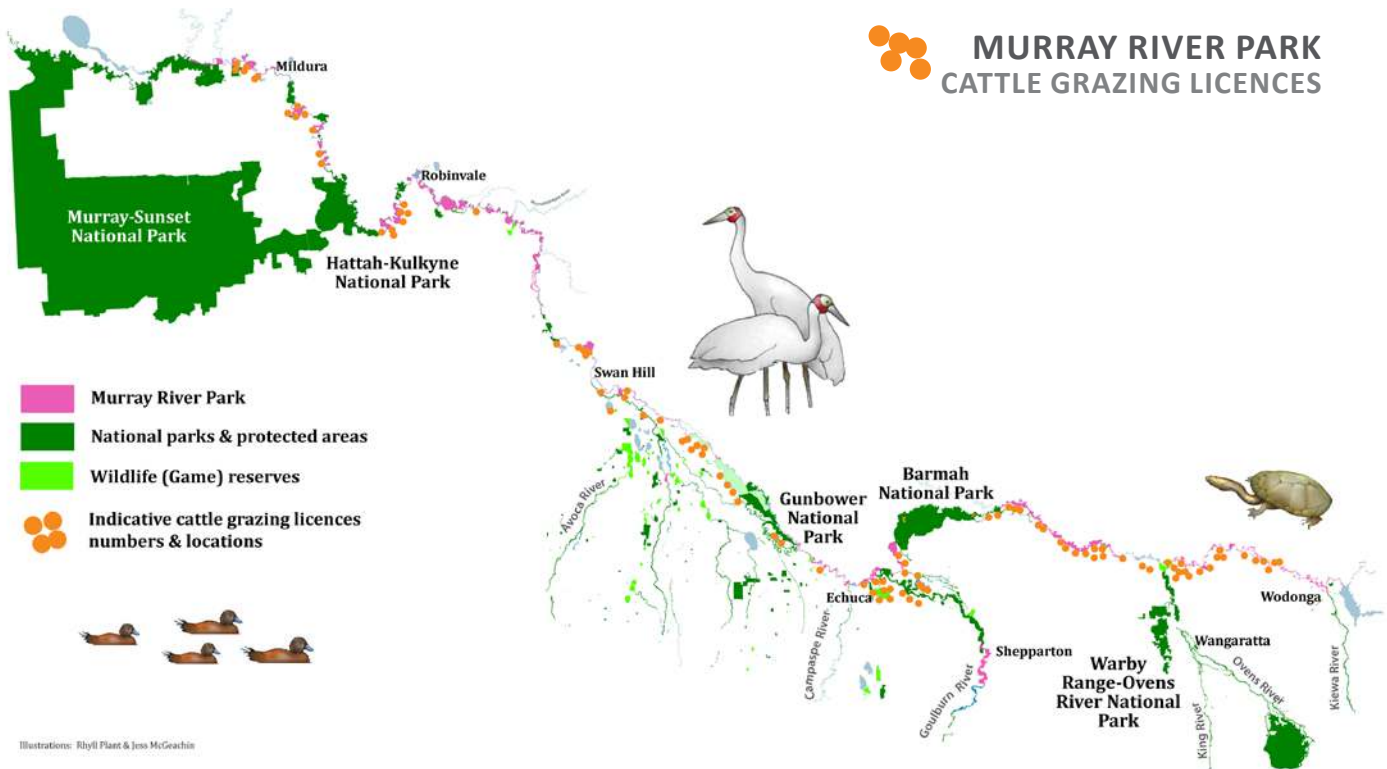
A type of regional park the Murray River Park was to be made up of small protected areas stretching from the South Australian border to Lake Hume in Victoria's east and were part of plans to protect some of the largest

and oldest River Red Gum forests in the world.

Land set aside for the new park was largely handed over to Parks Victoria to manage, and Parks Victoria initiated a program to phase out cattle grazing in the new park. Under legislation cattle grazing licences were to be phased out by 30 September 2014, or when current licences expired, whichever came first.

Parks Victoria was part way through phasing out cattle grazing in the Murray River Park when the Victorian Coalition Government re-issued around 200 cattle grazing licences.

Parks Victoria continues to manage the area designated as Murray River Park, even though it is not part of Victoria's parks system and they no longer have any recurrent funding for management of these areas.



FACT SHEET

CREATION OF A MURRAY RIVER PARK – LOCKED IN LIMBO

PUBLISHED: June 2015

MAPPING THE PARKS

The maps in this fact sheet show the planned Murray River Park in pink. It was classified as a regional park under the Crown Land Reserves Act, the mapped areas are reflected in the legislation drawn up to create the red gum and Murray River parks.

However, their proclamation depends on a detailed land boundary survey (plans signed by the Surveyor-General) being gazetted.

NOTE: Maps on pages 2-6 of this fact sheet have been created from original map work - 'Map A: River Red Gum Forests Investigation Final Recommendations for Public Land Use'.

KEY POINTS

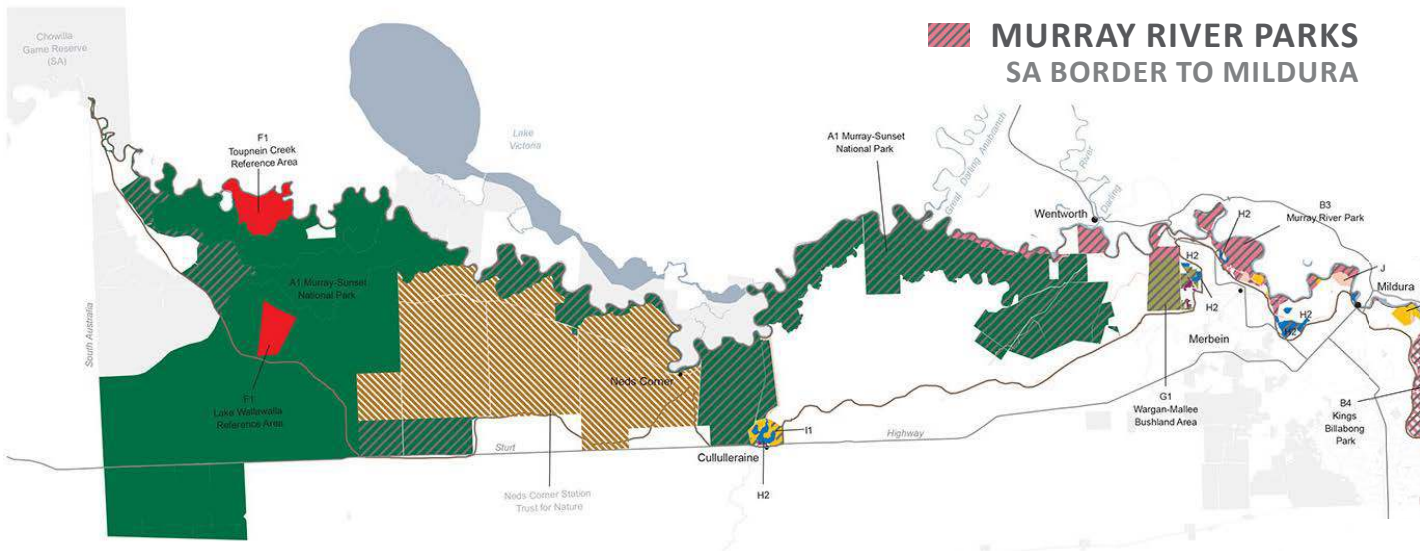
- Victoria's Brumby Government was committed to creating a new Murray River Park, but its intentions were undermined by the incoming Baillieu/Napthine governments. For Labor, creation of the new park remains unfinished business.
- The Murray River Park would provide crucial ecological links between Victoria's river red gum national parks.
- Victorian Labor made a pre-election commitment to 'ban cattle grazing in the red gum national parks'.

Cattle grazing has been banned in red gum national parks since 2010, with a staged phase-out planned through to 2014. However, cattle continue to graze under licence in areas designated to be the Murray River Park, which is yet to be gazetted.

- Formally declaring the Murray River Park is consistent with the intentions and policy of this and the previous Victorian Labor governments.
- Security of tenure is required to prevent 'ideological downgrading' of the park's status by future Coalition governments.
- The former Victorian Coalition Government re-issued 229 grazing licences and numerous other licences for the Murray River Park, despite a staged phase-out of grazing having been under way for more than one year.
- A report by the Department of Health in 2011 recommended removing stock from riverside land.

WHAT NEEDS TO HAPPEN

1. The Murray River Park needs to be formalised under the Crown Lands Reserves Act (see section 47B and 63). This option requires a government gazettal.
2. Parks Victoria needs at least \$5 million a year in extra funding to manage the Murray River Park.

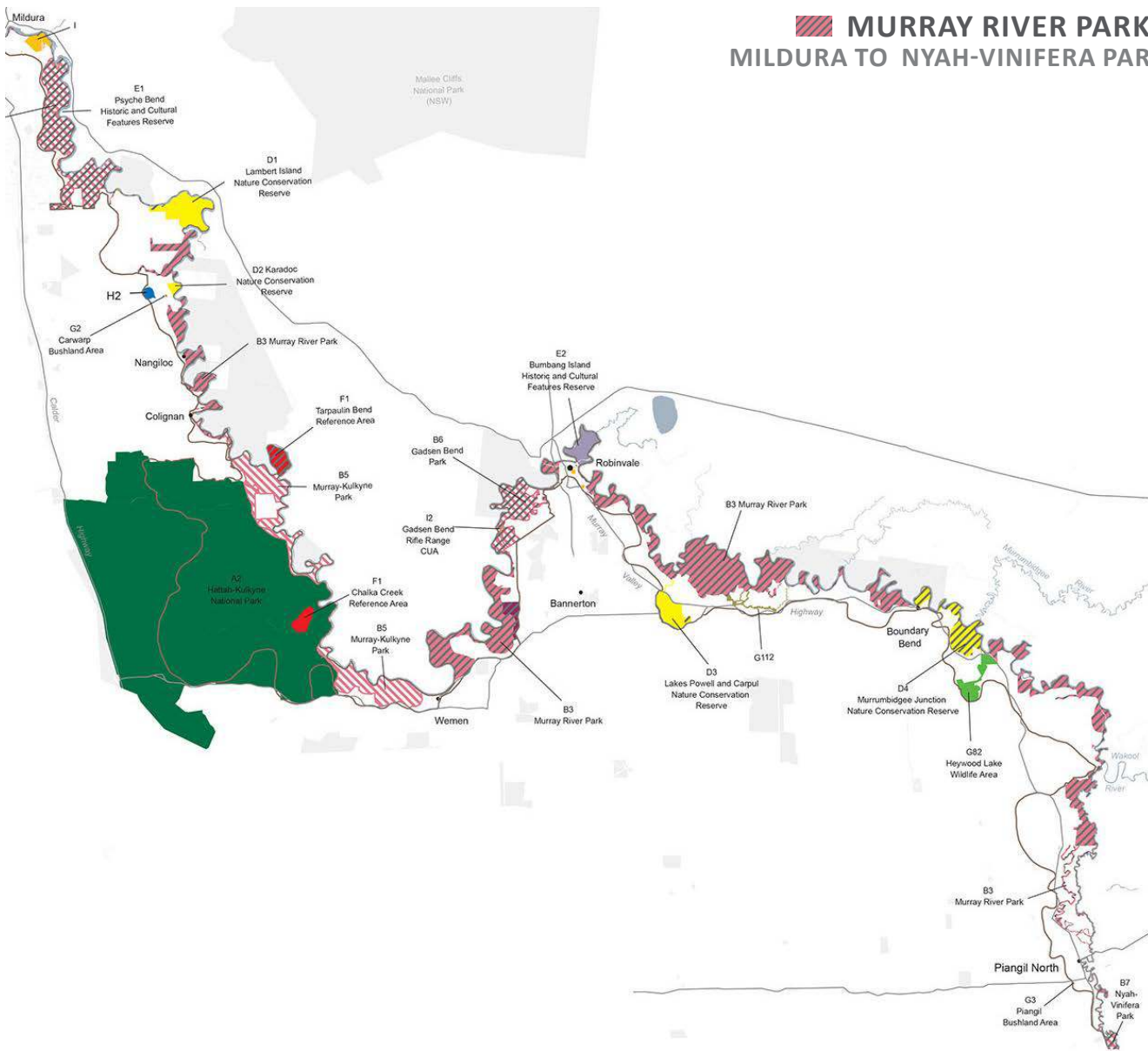


PUBLIC LAND USE		
National Park	Natural Features Reserve (see Note 5)	Plantation
Regional Park	Wildlife Area (State Game Reserve)	Uncategorised Public Land
Other Park (Schedule 3, National Parks Act 1975)	Streamside Area	Freehold
State Forest	Water Production, Distribution and Drainage	Public land outside the Investigation Area
Nature Conservation Reserve	Community Use Area	Investigation Area Boundary
Historic and Cultural Features Reserve	Services and Utilities	Trust for Nature Land
Reference Area	Earth Resources Extraction Area	Recommended Change in Public Land Use
		Major Towns
		Major Roads
		Major Rivers
		State Border

FACT SHEET

CREATION OF A MURRAY RIVER PARK – LOCKED IN LIMBO

PUBLISHED: June 2015

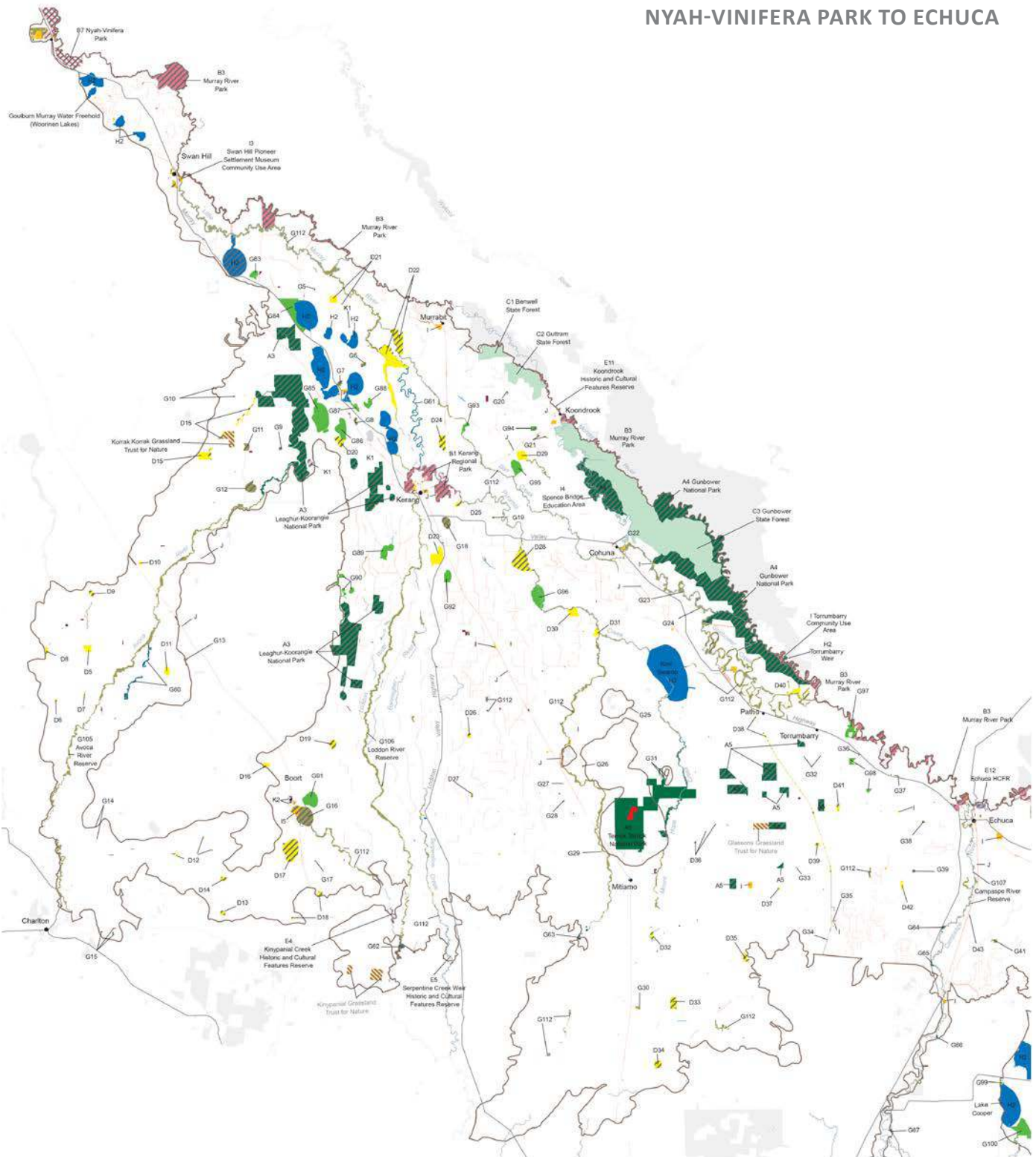


FACT SHEET

CREATION OF A MURRAY RIVER PARK – LOCKED IN LIMBO

PUBLISHED: June 2015

MURRAY RIVER PARKS NYAH-VINIFERA PARK TO ECHUCA

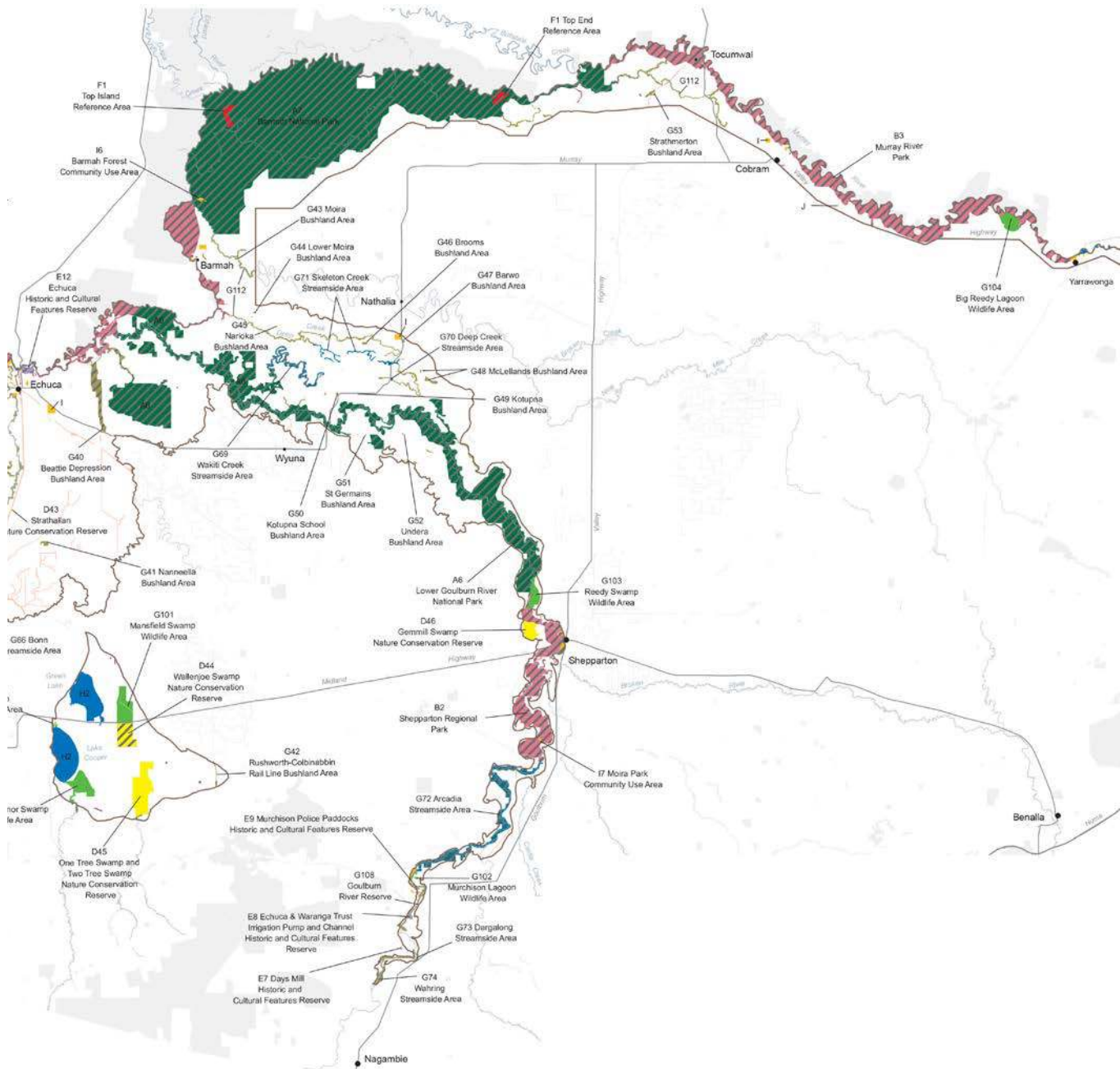


FACT SHEET

CREATION OF A MURRAY RIVER PARK – LOCKED IN LIMBO

PUBLISHED: June 2015

MURRAY RIVER PARKS ECHUCA TO YARRAWONGA

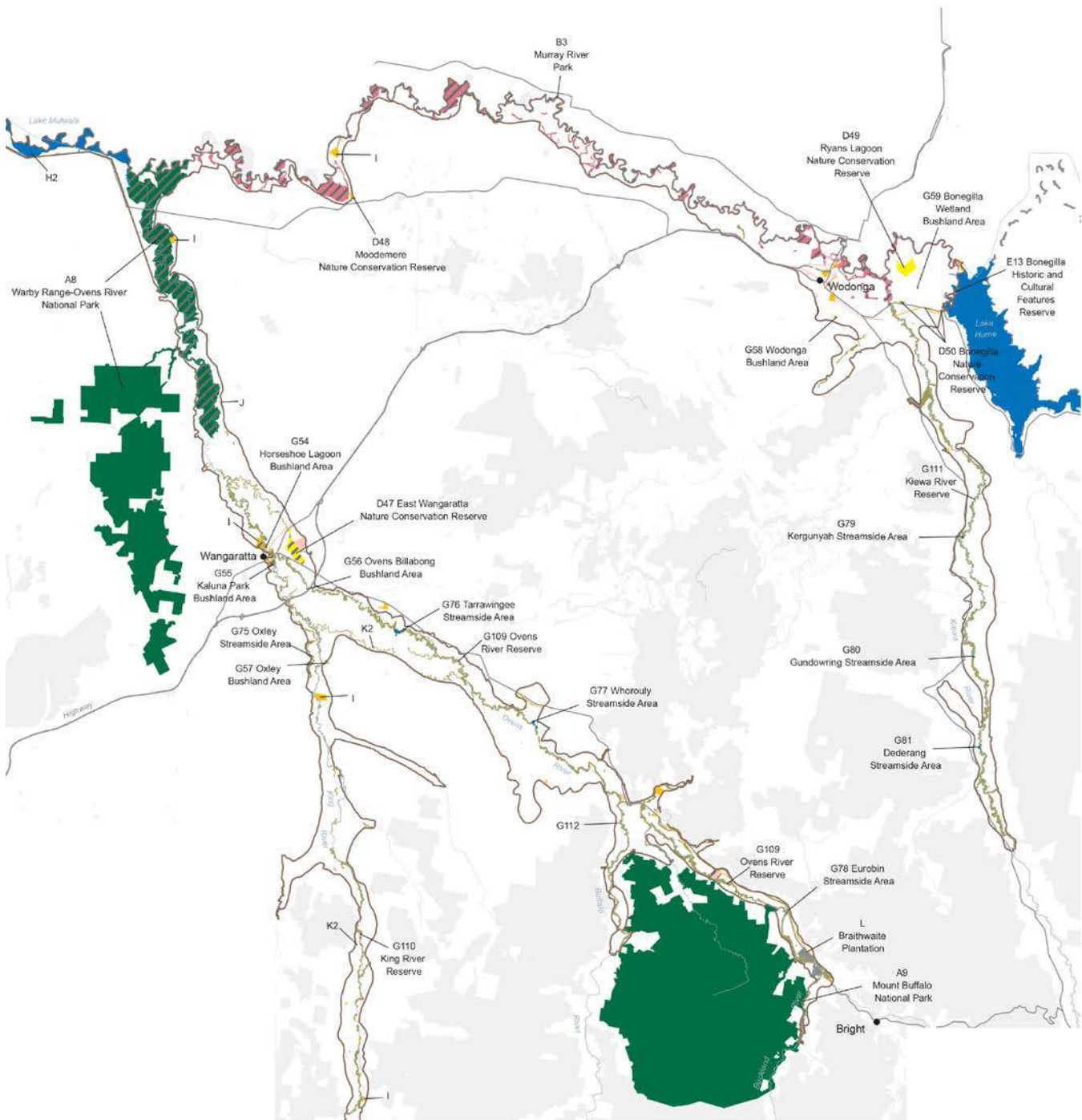


FACT SHEET

CREATION OF A MURRAY RIVER PARK – LOCKED IN LIMBO

PUBLISHED: June 2015

MURRAY RIVER PARKS LAKE MULWALA TO LAKE HUME



FACT SHEET