

## Reconnecting the landscape

A vision to restore the Victorian bush

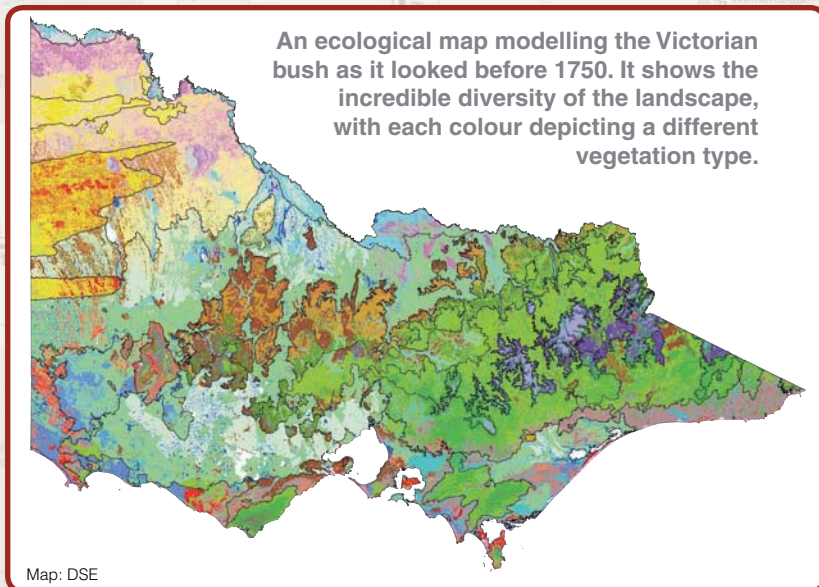
### way back when

Back in 1750 Victoria was a very different place from what it is now.

Forests, woodlands, deserts and wetlands were filled with an extraordinary mix of native plants and wildlife.

One of the most striking features of this landscape was the grasslands, which stretched all the way from what's now the edge of Melbourne to the South Australian border.

→ 1750



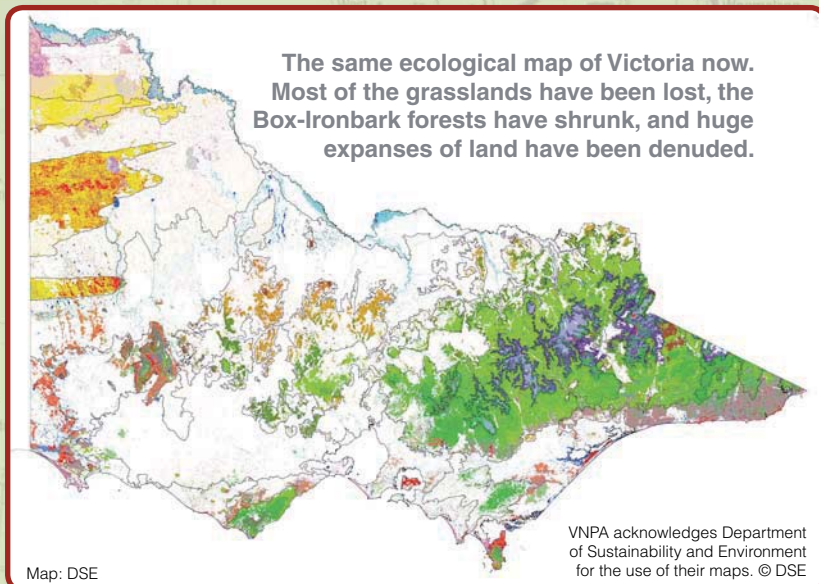
### the picture today

Now, the picture is very different. Victoria is the most cleared state in Australia.

We have lost more than half our original native vegetation, and every year at least another 4000ha of bushland is lost.

Our grasslands have all but vanished and our Box-Ironbark forests, honeypots for many of our birds in winter, have been devastated.

→ 2010



In partnership with key environment groups, we are working hard to incorporate the vision of 'reconnecting the landscape'.

VNPA acknowledges Department of Sustainability and Environment for the use of their maps. © DSE

### NATIVE VEGETATION

- |   |  |  |
|---|--|--|
| <ul style="list-style-type: none"> <li>Coastal Scrubs Grasslands and Woodlands</li> <li>Heathy Woodlands</li> <li>Lowland Forests</li> <li>Box-Ironbark Forests or dry/lower fertility Woodlands</li> <li>Lower Slopes or Hills Woodlands</li> <li>Dry Forests – exposed and/or lower altitude</li> <li>Dry forests – sheltered and/or lower altitude</li> <li>Wet or Damp Forests</li> <li>Riparian Scrubs or Swampy Scrubs and Woodlands</li> </ul> | <ul style="list-style-type: none"> <li>Riparian Forests or Woodlands</li> <li>Rainforests</li> <li>Montane Grasslands, Shrublands or Woodlands</li> <li>Sub-alpine Grasslands, Shrublands or Woodlands</li> <li>Plains Grasslands and Chenopod Shrublands</li> <li>Plains Woodlands or Forests</li> <li>Plains Woodlands or Forests – semi-arid (non-Eucalypt)</li> <li>Riverine Grassy Woodlands or Forests</li> <li>Herb-rich Woodlands</li> </ul> | <ul style="list-style-type: none"> <li>Heathlands</li> <li>Mallee – Siliceous sands</li> <li>Mallee – Calcareous dunefields</li> <li>Mallee – Clay plains</li> <li>Mallee – Sandstone ridges and rises</li> <li>Wetlands</li> <li>Salt-tolerant and/or succulent Shrublands</li> <li>Rocky Outcrop or Escarpment Scrubs</li> </ul> |
|---|--|--|



Red mallee in flower. Photo: Bernie Fox